

AGENDA

Meeting: Children's Select Committee
Place: Council Chamber - County Hall, Bythesea Road, Trowbridge, BA14 8JN
Date: Thursday 18 July 2024
Time: 10.30 am

Please direct any enquiries on this Agenda to max.hirst@wiltshire.gov.uk of Democratic Services, County Hall, Bythesea Road, Trowbridge, direct line 01225718215 or email max.hirst@wiltshire.gov.uk

Press enquiries to Communications on direct lines (01225) 713114/713115.

This Agenda and all the documents referred to within it are available on the Council's website at www.wiltshire.gov.uk

Pre-meeting information briefing

There will be a briefing session starting at **9.30am**, immediately before the meeting. Its focus will be on **Oral Health** and will cover:

An overview of the known issues around Child Oral Health in Wiltshire and nationally

Membership:

Cllr Jon Hubbard (Chairman)
Cllr Jacqui Lay (Vice-Chairman)
Cllr Helen Belcher OBE
Cllr Mary Champion
Cllr Caroline Corbin
Cllr Carole King
Cllr Kathryn MacDermid

Cllr Kelvin Nash
Cllr Antonio Piazza
Cllr Mike Sankey
Cllr Jo Trigg
Cllr Mark Verbinnen
Cllr Bridget Wayman

Substitutes:

Cllr Trevor Carbin
Cllr Daniel Cave
Cllr Adrian Foster
Cllr Johnny Kidney
Cllr Jack Oatley

Cllr Sam Pearce-Kearney
Cllr Ricky Rogers
Cllr Martin Smith
Cllr Iain Wallis

Non-Elected Voting Members:

Dr Mike Thompson

Clifton Diocesan RC Representative

Non-Elected Non-Voting Members:

Nikki Barnett	Further Education Representative
John Hawkins	School Teacher Representative
Maisy Humphrey	Children & Young People's Representative
Declan Kiely	Children & Young People's Representative - Substitute

Recording and Broadcasting Information

Wiltshire Council may record this meeting for live and/or subsequent broadcast. At the start of the meeting, the Chairman will confirm if all or part of the meeting is being recorded. The images and sound recordings may also be used for training purposes within the Council.

By submitting a statement or question for a meeting you are consenting that you may be recorded presenting this and that in any case your name will be made available on the public record. The meeting may also be recorded by the press or members of the public.

Any person or organisation choosing to film, record or broadcast any meeting of the Council, its Cabinet or committees is responsible for any claims or other liability resulting from them so doing and by choosing to film, record or broadcast proceedings they accept that they are required to indemnify the Council, its members and officers in relation to any such claims or liabilities.

Details of the Council's Guidance on the Recording and Webcasting of Meetings is available on request. Our privacy policy can be found [here](#).

Parking

To find car parks by area follow [this link](#). The three Wiltshire Council Hubs where most meetings will be held are as follows:

County Hall, Trowbridge
Bourne Hill, Salisbury
Monkton Park, Chippenham

County Hall and Monkton Park have some limited visitor parking. Please note for meetings at County Hall you will need to log your car's registration details upon your arrival in reception using the tablet provided. If you may be attending a meeting for more than 2 hours, please provide your registration details to the Democratic Services Officer, who will arrange for your stay to be extended.

Public Participation

Please see the agenda list on following pages for details of deadlines for submission of questions and statements for this meeting.

For extended details on meeting procedure, submission and scope of questions and other matters, please consult [Part 4 of the council's constitution](#).

The full constitution can be found at [this link](#).

Our privacy policy is found [here](#).

For assistance on these and other matters please contact the officer named above for details

AGENDA

Pre-meeting information briefing

The meeting will be preceded by a presentation starting at **9.30am**, in the meeting room.

Topic: Oral Health

An overview of the known issues around Child Oral Health in Wiltshire and nationally

All members and substitutes of the Children's Select Committee are welcome to attend.

PART I

Items to be considered while the meeting is open to the public

1 **Apologies**

To receive any apologies or substitutions for the meeting.

2 **Minutes of the Previous Meeting** (*Pages 9 - 16*)

To approve and sign the minutes of the previous meeting held on 6 June 2024.

3 **Declarations of Interest**

To receive any declarations of disclosable interests or dispensations granted by the Standards Committee.

4 **Chairman's Announcements**

To receive any announcements through the Chairman.

5 **Public Participation**

The Council welcomes contributions from members of the public.

Statements

If you would like to make a statement at this meeting on any item on this agenda, please register to do so at least 10 minutes prior to the meeting. Up to 3 speakers are permitted to speak for up to 3 minutes each on any agenda item. Please contact the officer named on the front of the agenda for any further clarification.

Questions

To receive any questions from members of the public or members of the Council received in accordance with the constitution.

Those wishing to ask questions are required to give notice of any such questions in writing to the officer named on the front of this agenda no later than 5pm on **Thursday 11 July** in order to be guaranteed of a written response. In

order to receive a verbal response questions must be submitted no later than 5pm on **Monday 15 July**. Please contact the officer named on the front of this agenda for further advice. Questions may be asked without notice if the Chairman decides that the matter is urgent.

Details of any questions received will be circulated to Committee members prior to the meeting and made available at the meeting and on the Council's website.

6 **Youth Justice Services Inspection Outcome** (*Pages 17 - 20*)

In February 2024 HM Inspectorate of Probation carried out an inspection of Wiltshire Council's youth justice services. The committee is asked to consider the attached report which summarises the findings, recommendations and planned actions coming out of the inspection.

There is a link to HMIP's full report in the appendices.

7 **NHS Dentistry Access and Oral Health Improvement for Children and Young People** (*Pages 21 - 30*)

To consider the attached report on the current provision of NHS dentistry and plans for oral health improvement programmes for children and young people in Wiltshire.

8 **Wiltshire Young Carers Annual Update**

To consider the update on the Young Carers Service and review how the aims of the carers strategy are being delivered.

Reports to follow.

9 **Voice and Participation Service Annual report 2023-2024** (*Pages 31 - 68*)

To consider the attached Annual Report which outlines the activities, achievements and challenges of the Voice and Participation Service in the previous 12 months.

10 **Children and Young People Health and Wellbeing Survey**

For the committee to be notified of plans for the survey this year. This will be a verbal update.

11 **Regular updates**

Updates on information valuable for the committee, but unlikely to require a decision.

Members of the committee are therefore invited to indicate in advance of the meeting if they would like further information or have questions on these regular updates, so that relevant officers can be invited to attend the meeting.

11a **School Ofsted Judgements** (*Pages 69 - 74*)

An update including information regarding the most recent Ofsted Inspection reports, presenting an ongoing view of the effectiveness of schools as seen by Ofsted Inspection.

11b **DfE Changes - Update from Department for Education** (Pages 75 - 78)

An update on developments relating to children's services arising from the Department for Education.

11c **Working together to improve school attendance** (Pages 79 - 86)

The DfE published new non-statutory guidance in May 2022 to help schools, trusts, governing bodies and local authorities maintain high levels of school attendance. The guidance applies from September 2022.

This regular update is an opportunity for the committee to be aware of the latest requirements, as set out in the guidance.

11d **Schools Forum** (Pages 87 - 88)

To receive a very brief update highlighting key items from the last meeting of Schools Forum, to enable the Children's Select Committee to be informed in a timely manner of the work undertaken by the Schools Forum through the year.

Full agendas and minutes for the Schools Forum can be accessed here [Schools Forum | Wiltshire Council](#)

11e **Corporate Parenting Panel** (Pages 89 - 90)

To receive a very brief update highlighting key items from the last meeting of the Corporate Parenting Panel, to enable the Children's Select Committee members, as Corporate Parents, to be informed in a timely manner of the work undertaken by the Corporate Parenting Panel through the year.

11f **Safety Valve update** (Pages 91 - 98)

To receive regular updates from officers on the development of the Safety Valve project, as well as input from the overview and scrutiny representative.

11g **Directors' update**

To receive a verbal update from Directors highlighting any key issues (current or emerging), successes or milestones in their respective areas since the last meeting of the committee, which may not require a full agenda item and are not covered elsewhere on this agenda.

This is also an opportunity for matters arising from the minutes of the previous meeting.

11h **Cabinet Member and Portfolio Holders' update**

To receive a verbal update from the Cabinet Member and / or Portfolio Holders highlighting any news, successes or milestones in their respective areas since the last meeting of the committee, which may not require a full agenda item and are not covered elsewhere on this agenda.

This is also an opportunity for matters arising from the minutes of the previous meeting.

11i **Chair's update**

To receive a verbal update from the chair on any work undertaken or news since the last meeting that would not require a full agenda item and would not be suitable under Chairman's Announcements (where no debate is allowed).

This is also an opportunity for matters arising from the minutes of the previous meeting.

11j **Overview and Scrutiny Activities Updates**

The committee will receive updates from active Task Groups, Rapid Scrutiny exercises and the committee's board representatives.

A report by the Senior Scrutiny Officers providing an update on Task Group activity since the last meeting is attached.

12 **Forward Work Programme** (*Pages 99 - 114*)

The Committee is asked to note the attached documents showing the relevant items from the overview and scrutiny forward work programme and the latest version of the strategy list for the Children, Education and Skills directorate.

13 **Date of Next Meeting**

To note that the next scheduled meeting is due to be held on 5 September 2024 at County Hall, Trowbridge, starting at 10.30am.

14 **Urgent Items**

Any other items of business which the Chairman agrees to consider as a matter of urgency.

15 **Glossary**

PART II

Items during whose consideration it is recommended that the public should be excluded because of the likelihood that exempt information would be disclosed.

This page is intentionally left blank

Children's Select Committee

MINUTES OF THE CHILDREN'S SELECT COMMITTEE MEETING HELD ON 6 JUNE 2024 AT COUNCIL CHAMBER - COUNTY HALL, BYTHESEA ROAD, TROWBRIDGE, BA14 8JN.

Present:

Cllr Jon Hubbard, Cllr Jacqui Lay, Cllr Kelvin Nash, Cllr Carole King, Cllr Mary Champion, Cllr Caroline Corbin, Cllr Trevor Carbin (Substitute), John Hawkins

Also Present:

Cllr Suzanne Wickham, Cllr Laura Mayes

41 **Election of Chairman**

Nominations were sought for the position of Chairman of the Children's Select Committee for the 2024/25 municipal year.

Decision

Councillor Jon Hubbard was elected Chairman of the Children's Select Committee for the 2024/25 municipal year.

Cllr Jon Hubbard in the Chair.

42 **Election of Vice-Chairman**

The Chairman sought nominations for the position of Vice-Chair of the Children's Select Committee for the 2024/25 municipal year.

Decision

Councillor Jacqui Lay was elected Vice-Chairman of the Children's Select Committee for the 2024/25 municipal year.

43 **Apologies**

Cllr Jo Trigg (Substituted by Cllr Trevor Carbin)
Cllr Kathryn MacDermid
Cllr Mark Verbinnen
Cllr Bridget Wayman
Cllr Peter Hutton
Cllr Mike Sankey
Dr Mike Thompson

44 **Minutes of the Previous Meeting**

Resolved

To change Cllr Suzanne Wickham’s attendance from “Present” to “Also present” and approve the minutes of previous meetings, held on 12 March 2024, as a true and correct record.

45 **Declarations of Interest**

There were no declarations of interest.

46 **Chairman's Announcements**

The Chair noted a new, regular addition to the agenda on pages 9 and 10.

A list of standard scrutiny questions that can be applied to almost any topic that a scrutiny committee might encounter. It would be included for members’ reference in all further Overview and Scrutiny agendas.

47 **Public Participation**

There was no public participation.

48 **Childcare Sufficiency in Wiltshire**

The Chair reminded the committee that this was a lighter “update” report and that a full report was received in October 2023. Lucy-Anne Bryant briefly introduced the report which was taken as read and then welcomed any questions.

Debate

Councillors expressed concerns at the level of staff and places in some areas and how staff could be better recruited and retained. The potential benefit of accessing an older workforce who might be suitable and available for childcare roles was raised.

It was clarified that certain statistics Councillors were looking for were contained within the full report in October 2023 and would be updated in the next full report.

It was clarified that the statistic stating 8027 childcare places were available was based on staffing levels and not infrastructure.

The situation in Marlborough for places was explained as being monitored, as due to a lower birthrate any capacity issues had subsided and would be observed for upcoming years.

It was clarified that upcoming Section 106 funding for Bradford-on-Avon would be translated into 24 places and be available from January 2025.

Resolved

To receive the annual report in November 2024 and:

- A specific update on actions taken to address sufficiency concerns highlighted in Bradford-on-Avon, Melksham, Marlborough, Warminster and Westbury;
- The impact of officers attending Careers Fairs and working with the Job Centre and linking with Supporting Families Employment Advisers to raise awareness of a career in childcare (and if possible linking with any available analysis of the DfE's website and national advertising campaign [Working in early years and childcare - Early Years Careers](#));
- The development / implementation of Wiltshire College's offering of Step into Early Years as a starter course;
- The success of Sector Based Workforce Programmes (SWAP) that was planned with Job Centre and Family and Community Learning;
- Wraparound childcare
- How commissioners work with organisations to support on recruitment issues and retention concerns

49 **Outcome of the Rapid Scrutiny on Emotional Wellbeing and Mental Health Strategy**

As the Lead Member for this joint rapid scrutiny with the Health Select Committee, the Chair opened the item by stating that as a strategy it seemed to address a number of concerns, but it would remain of interest to see how they would be implemented.

Debate

It was clarified that the aim was on early help and prevention rather than focusing on the statistics of those already suffering with their mental health. It was also stressed that attempting to find definitive statistics would be very difficult.

It was clarified that although a contract review was upcoming it was included within the strategy and would not disrupt the strategy's focus or timeline.

Resolved

That the rapid scrutiny group need to review the delivery plan to be able to draw meaningful conclusions and recommendations.

That the rapid scrutiny group meet again when the Delivery Plan has been drafted (possibly September) to review how the strategy will be implemented in Wiltshire.

That CSC will review how the overarching mental health strategy is aligned with existing strategies (e.g. carers support) and how the strategy informs commissioning of related services.

50 **Children's Select Committee - areas of interest and work for 2024-25**

As the first meeting of this municipal year the committee was invited to consider the areas of interest and work it wished to focus on for 2024-25.

The attached forward work programme contained items that had been agreed at previous meetings as well as requests for overview and scrutiny involvement received by the chair and vice-chair of the committee when they attended the annual meeting with the Executive on Tuesday 14 May 2024.

In readiness for the new Council after May 2025, the committee would be expected to produce a "legacy report" which typically include recommendations on future work as well as a review of "ways of working".

The Chair invited the committee to:

1. Challenge the proposed forward work programmes;
2. Propose additional areas of work and focus for 2024-25;
3. Make suggestions on changes that would improve the committee's current ways of working (including briefings, rapid scrutiny exercises and task groups).

a. Agenda items for the committee

Councillors stressed the importance of pre-meeting briefings and their benefit. The need to focus on actionable outcomes from agenda items was also remarked.

b. Task groups and rapid scrutiny exercises

Officers informed the committee of each proposed rapid scrutiny:

Education Performance Outcomes
Inclusion
Homelessness

And each proposed task group:

School Performance and Attainment Outcome
Residential Care and Complex Care
Children and Young Peoples Mental Health Services and Developments
Post-16 Provision
Budget and Major Contracts

c. Standing Task Group

No comments

d. Briefing for the committee

No comments

e. Briefing for the Chair and Vice-Chair

No comments

51 **Regular updates**

51a Safety Valve update

The report was briefly introduced and then members were invited to ask questions.

Debate

Councillors commented that the update reports should where possible focus on presenting how far along the process the Council is and seeing tangible milestones. In light of this the use of Red, Amber, Green rating was criticised as creating uncertainty and confusion. Councillors did not want to see area being highlighted green just because a problem had been identified but because concrete evidence can be seen of improvement.

It was clarified that mainstream inclusion is incredibly important and explicitly laid out as a priority and this would be better presented in reports going forward.

The report was noted.

51b School Ofsted Judgements

The report was noted.

51c DfE Changes - Update from Department for Education

The report was noted.

52 **Working together to improve school attendance**

The committee kindly requested that in future the report include data on temporary and permanent exclusions, including how many are SEND children.

The report was noted.

53 **Schools Forum**

There have been no meetings of the Schools Forum since the last meeting.

53a Corporate Parenting Panel

In process of finalising annual report which was predicted to be positive.

The report was noted.

54 **Directors' update**

Lucy Townsend, Corporate Director for People, referenced the Integrated Care Alliance and their forums which would focus its attention on priorities it can have the most impact on, such as its next meeting on oral health.

Lucy also referred to the Integrated Care Board's restructuring and more information would follow.

Jen Salter, Director for Families and Children, referred to the publishing of the "My Youth Justice" inspection and the report would be coming to the committee at its next meeting.

Kathryn Davis, Director for Education and Skills, highlighted the number of families from Afghanistan being supported in temporary accommodation before being resettled into permanent homes. Some children had found places in Wiltshire Schools.

55 **Cabinet Member and Portfolio Holders' update**

Suzanne Wickham briefly wished to share some good news and awareness of Dyslexia Friendly schools and all their great work that is receiving interest from across the country.

56 **Chair's update**

The Chair briefly updated the Committee on his work within the LGA.

57 **Overview and Scrutiny Activities Updates**

There were no significant updates to report as all relevant items had been covered elsewhere in the agenda.

58 **Date of Next Meeting**

The next meeting will be on 18 July 2024.

59 **Urgent Items**

There were no urgent items.

60 **Glossary**

(Duration of meeting: 10.30am – 12.30pm)

The Officer who has produced these minutes is max.hirst@wiltshire.gov.uk of Democratic Services, direct line 01225718215, e-mail max.hirst@wiltshire.gov.uk

Press enquiries to Communications, direct line 01225 713114 or email communications@wiltshire.gov.uk

This page is intentionally left blank

Wiltshire Council

Children's Select Committee

July 2024

HMIP inspection of Wiltshire Youth Justice Service

Purpose of report

1. To appraise the Children's Select Committee of the outcome and findings of His Majesty's Inspection Probation Wiltshire Youth Justice Service (YJS) and points of note.

Background

2. In February 2024, HMIP conducted an inspection of Wiltshire Youth Justice Service. A total of 42 cases were inspected across 3 domains, Court disposals (16 cases) Out of Court disposals (24 cases) and Resettlement (2 cases) and 38 interviews were undertaken with case managers. Surveys were undertaken with children and families, YJS staff and volunteers. Throughout the week of fieldwork, there were focus groups and individual interviews that involved strategic and operational managers, partner agencies, frontline staff, and members of the YJS executive board.

Main considerations for the committee

3. The inspection (report published 13th May 2024, see appendix) judged the overall effectiveness of our services to be Good. The breakdown of judgements is as follows:

Judgement	Grade
Overall rating	Good
Organisational Delivery	Good
Court Disposals	Requires Improvement
Out of Court disposals	Good
Resettlement	Outstanding

Key highlights from the findings are as follows:

- Wiltshire YJS seeks to place children at the centre of its work to meet their needs, promote pro-social identities, and help them to not reoffend.
- Individualised interventions, supported by a trauma-informed approach, ensure that children's diversity needs are understood well, and that measures are put in place to help them flourish.
- The YJS executive management board is made up of highly dedicated members, who work well to advocate for YJS children in their own organisations.

- The board chair is passionate, she holds board members to account, recognises what each member brings, and makes appropriate challenge when needed.
 - Provision of services to support children is broad and there is a range of services available for children.
 - Staff and volunteers are, without doubt, the organisation's most valuable assets.
 - They are optimistic and nurture a 'can do' attitude with children. They are excellent ambassadors for the children they support.
 - The active listening to the voices of children and their parents or carers is impressive. Children frequently attend the executive board to provide testimonies of their experience of the YJS.
4. Three areas for improvement were identified which are now the focus of a service action plan. These are:
- To improve the quality of assessment and planning work to keep children safe and manage the risk of harm they present to others.
 - Ensure that management oversight is consistently effective in addressing and supporting case managers practice, so that practitioners are clear about what they need to improve and embed this within their practice.
 - Ensure that robust contingency plans are in place for all children that address their safety and wellbeing, and risk of harm to others.
5. The Youth Justice Service leadership are proud of this achievement, acknowledging, as HMIP did that during 2023, the YJS underwent a significant management team restructure which by nature, resulted in staffing changes.
6. Achieving a judgement of Good was only possible with the dedication, support, and care that our staff and volunteers give to some of the most vulnerable children and families in Wiltshire, we are very proud and grateful to them.
7. The team are both fully aware of and engaged in, the areas for development with targeted training and quality assurance activity already identified. This is outlined in detail in the action plan which was submitted to HMIP in May. The annual YJS business plan 2024/25 will be updated to reflect these areas of focus and presented back to Committee at a future date.

Conclusion

8. The Committee is informed of the outcome of the inspection of Wiltshire Youth Justice Service.
-

Appendices

1. Link to published HMIP report:

[An inspection of youth justice services in Wiltshire \(justiceinspectorates.gov.uk\)](https://www.justiceinspectorates.gov.uk)

2. Wiltshire YJS Action plan



Wiltshire YJS Action
plan 24-25.docx

This page is intentionally left blank

Wiltshire Council

Children's Select Committee

18 July 2024

NHS Dentistry Access and Oral Health Improvement

Executive summary

This report aims to provide an update on the local commissioning arrangements for NHS dentistry, and an update on the allocation of funding for oral health improvement projects. It also aims to provide an overview of the key evidence base informing the priorities of work on improving NHS dentistry access and oral health improvement programmes.

Proposal

That the committee:

- a) receive a timely update on plans and progress on improving NHS dentistry access and oral health programmes following the allocation of funding.
- b) agree timescale for next update to the Childrens Select Committee on progress to improve NHS dentistry access and oral health improvements.
- c) are invited to consider whether further scrutiny would add value in building the evidence base to secure further funding in 25/26 (towards Q3-Q4).

Reason for proposal

This paper provides an update on the system changes taking place locally as well as nationally and how local NHS and Public Health teams are working together to improve dental care access and oral health outcomes for children and young people in Wiltshire, with input from regional programmes of work.

This follows the allocation of funding from the ICB dental underspend to resource oral health improvement programmes within 2024/25.

Author: Katie Davies, Public Health Principal – Health Improvement, Wiltshire Council and Victoria Stanley, Head of Primary Care POD, NHS BSW ICB.

Contact details: katie.davies@wiltshire.gov.uk and victoriastanley@nhs.net

NHS Dentistry Access and Oral Health Improvement

Purpose of report

1. The purpose of this report is to provide an update on the key evidence in relation to children and young people dental care access and oral health outcomes. The paper provides an overview of the plans in place to improve dental care access and oral health outcomes and the progress achieved against these plans.
2. It is anticipated that the outcome of this report will provide assurance to Children's Select Committee that progress is being made to improve the NHS dentistry access for children and young people, and to improving the oral health outcomes of children and young people in Wiltshire. There are long term solutions in place or being developed which follows the evidence base and builds on the available data and intelligence, yet it will take time for these outcomes to be appreciated.

Background

3. Following the Integrated Care Board (ICB) receiving delegated responsibility for primary dental services on 01 April 2023, the Bath and North East Somerset, Swindon and Wiltshire (BSW) ICB has been working with colleagues in the South West Collaborative Commissioning Hub (CCH) to explore new opportunities to commission dental services to prevent poor oral health, protect and expand access and deliver high quality care.
4. Meeting these ambitions, will require careful consideration as to how to deploy the limited available resource. From a national dental care and treatment perspective, the restoration of mandatory services within the dental contract following the pandemic remains a key delivery priority.
5. This focus on mandatory services is critical to restoring access to dental care for most people, with the current national dental contractual framework also enabling the ICB to tailor services to meet specific population needs, and to take steps to support practices with changes to Units of Dental Activity (UDA) values, where this presents clear value for money.
6. In July 2023, the House of Commons Health and Social Care Committee¹ reported on NHS dentistry following the British Dental Association (BDA) and BBC research in August 2022 that at the time showed 90% of practices across the UK were not accepting new adult NHS patients. Whilst no specific reference was made in relation to children, the report acknowledged several case studies

¹ House of Commons Health and Social Care Committee, 2023, NHS Dentistry

submitted by several Healthwatch organisations across the Country, referencing an inability for whole families (parents and children) to be able to see a dentist.

7. The inquiry made several recommendations, covering access, including changes to the dental contract, workforce and the professions' representation within integrated care systems (ICS).
8. These recommendations included a patient information campaign, rigorous adherence to NICE recall guidelines, ringfenced funding, interventions to under-performing practices, a national workforce survey and a routine data collection of NHS dentists, incentives to recruit and retain the dental workforce, undertaking of an oral health needs assessment, clarification of flexible commissioning capabilities within the contact framework and finally representation of the dental profession with integrated care boards to inform decision-making.

Organisation of NHS Specialist Dental Services and Oral Health Promotion

9. In November 2023, Wiltshire Public Health undertook a dental and oral health evidence review of all available data and intelligence. This informed both dental and oral health priorities in Wiltshire, along with a BSW 'Case for Change' document presented by ICB analysts that clearly set out the challenge to improve oral health for children and adults as essential for good general health, with performance showing where we needed to focus attention to improve.
10. To accompany this, the ICB and Public Health team were able to negotiate the extraction of oral health promotion funding from the Great Western Hospital contract who provide community dental services for Wiltshire and Swindon. It was agreed this budget was un-utilised within Great Western Hospital and so agreement was made for this budget to transfer on an annual basis from the ICB and split accordingly between Swindon and Wiltshire public health teams. This amounts to £67,000 per year for Wiltshire.
11. The Wiltshire and Swindon Community Dental Service, which operates from Great Western Hospital, provides a dental service for people with complex needs who are unable to access care at high street dentists. This service can be accessed by a referral from a dental professional, a General Medical Practitioner or any other health or social care professional. It is made up of a team of dentists and Dental Care Professionals who have a special interest in treating patients with additional needs. Domiciliary care can be provided for patients who are housebound which prevents them from attending the clinic.

Update on key data on oral health and dental care needs

12. As of June 2023, 44.8% of children had not accessed dental services in the 12 months prior². When comparing to the year before, there has been an increase in the dental access by 13% since June 2022. This is in line with the national access rate for children.
13. A visit to the dentist for children and young people provides the opportunity for oral hygiene, diet, lifestyle and smoking cessation advice, alongside checking for

² [NHS Dental Statistics for England, 2022-23, Annual Report - NHS England Digital](#)

early signs of oral cancer and preventative interventions such as scaling and polishing, and fluoride varnish applications. Fluoride varnish applications are a highly preventative measure for tooth decay. This is currently only offered within a dental practice in Wiltshire. It is being scoped as to how this could operate within the community.

14. Most recent data (2021/22) indicate 15.5% of 5 year olds have visually obvious dental decay³. This is below the national average of 24%. It is worth noting this data is limited as it is based on small sample sizes at a local authority level, so caution is needed when making comparisons between localities and with the national average. However, it is data we routinely have available to inform priorities.
15. Wiltshire has a high proportion of children being admitted to hospital for tooth extractions under general anaesthetic. The hospital admissions rate for tooth decay for 0-19 year olds in Wiltshire is 1,036.7 per 100,000, as of January 2024. This is significantly higher than the rate in 2021/22 of 347.9 per 100,000. However, this is likely to be linked to dental recovery from the COVID-19 pandemic. However, the rate for Wiltshire, is much higher than B&NES (1,012.4 per 100,000) and Swindon (1,013.6 per 100,000). Further work is planned to improve our understanding of this data to inform programmes of work as part of prevention.
16. Tooth decay is still the most common reason for hospital admission in children aged 6 to 10 years. The caries-related tooth extraction episode rate for children and young people living in the most deprived communities was nearly 3 and a half times that of those living in the most affluent communities.
17. There is limited data and insight into specific vulnerable populations on their dental care and oral health needs, however working with National, regional and local analytical teams the ICB is exploring its ability to stratify dental patients using geo-demographics and population health analysis.
18. Within the Wiltshire School Health and Wellbeing Survey in 2021, children and young people were asked about their frequency of toothbrushing. The proportion of primary school children reporting brushing their teeth twice a day, was 83% for Primary School children, and 85% for Secondary School aged young people. There are improvements we need to increase the proportion of children and young people brushing their teeth twice a day as this is one of the most effective way of preventing tooth decay. When the data was analysed for vulnerable groups, the proportions were much lower. This intelligence is informing how Public Health prioritise oral health promotion programmes.

Access to NHS Dental Services

19. In February 2024 NHS England shared its plans to 'recover and reform NHS dentistry', acknowledging that NHS dentistry has been under pressure for some time and NHS dental teams have been working hard to meet the rising demand. The National plan aims to improve patient access to NHS dental care and return activity levels to pre-pandemic levels.

³ [Dental services - Data - OHID \(phe.org.uk\)](https://phe.org.uk)

20. The dental reform and recovery plan includes a range of measures including new patient payments for each new patient treated, a new dental van service, offering appointments to targeted communities, raising the minimum Unit of Dental Activity (UDA) price to £28 and golden hello payments to practices where recruitment may be particularly challenging.
21. The 2024/25 indicative total ringfenced BSW dental budget is £56.4 million, of which £34.2 million is aligned to primary care dentistry. There are currently robust investment plans amounting to £2.9 million focussed on the three key priorities of oral health improvement, access and workforce.
22. The ICB and Wiltshire Public Health team are working collaboratively on these three priorities, where more specifically they are to:
 - a. Improve access of dental care services to the Wiltshire population, considering vulnerable populations who are at risk of poorer oral health outcomes and face barriers in access to dental care and treatment.
 - b. Increase the dental workforce within Wiltshire
 - c. Improve oral health outcomes focused on Core20PLUS5 populations, including engagement, and further understanding population needs.
23. In addition, there has been an allocation of £300,000 to fund oral health activities in Wiltshire for 2024/25. This has been allocated from the dental care underspend. The Public Health team and ICB are undertaking scoping work to plan how this funding can be used to deliver dental outreach services in Wiltshire for our most vulnerable populations. There is work currently being undertaken to commission a training provider for Oral Health Champion training across workforces to provide evidence based oral health messaging and signposting to relevant dental services.
24. In October 2023, updated flexible commissioning guidance (originally issued in 2021) was shared with the aim to make the current NHS dental contracts more adaptable by allowing a proportion of the commissioned Units of Dental Activity (UDA) to be filled through locally agreed schemes. Its purpose was and still is to prevent poor oral health, protect and expand access and deliver high quality care as well as aid the restoration of mandatory services such as examination and diagnosis.
25. In March 2024 the ICB received an evaluation report of Child Friendly Dental Practice (CFDP) pilot schemes across the South West. The CFDP scheme aims to provide the management of acute dental issues as well as preventative measures to reduce the chance of oral ill health in children working in a more holistic approach. Additional training and support were provided to all pilot practices with peer support led by specialists and consultants in paediatric dentistry on a monthly basis.
26. The key findings from the National report, showed that 74% of patients seen within a CFDP were successfully treated and did not require any onward referral to secondary care. There was a noted reduction in the distance travelled to access care as the child friendly practices were often providing care closer to home than hospital dental providers. The most common interventions were oral health advice, x-rays and tooth extractions. Feedback from clinicians reported

increased confidence in treating children following additional training and peer support. Following the pilots, the ICB is supporting the recommendation to support the expansion of the child friendly dental practice scheme, developing the required skills-based training, service specification and identification of need across the BSW population.

27. Whilst the wider child friendly scheme is being developed the ICB has made a recommendation to support expressions of interest out to all primary care providers to deliver a children looked after, children in care and unaccompanied minor dental service. Using the ability to flexibly commission services, and a planned dental commissioning tool mapping service, it is hoped the ICB will be able to specifically target the service to providers, in areas where the population may not be able to access care.
28. During recent months, three dental clinics have been provided for resettled families at Larkhill. These dental clinics have highlighted the high need for dental care amongst these families. The provision of the Community Dental Service at the dental clinics have led to onward referrals for dental care and identifying high levels of dental decay in the children. Also, at these clinics the provider of our supervised toothbrushing programme, At Home Dental, provided interactive education sessions for children and parents on the importance of regular toothbrushing, along with the provision of oral hygiene packs for all the children and young people. Whilst the ICB awaits a formal report following the clinics at Larkhill, it is understood that a number of individuals have received various clinical interventions, and there is evidence of a high level of sugar intake by children and young people on site.

Oral Health Promotion Programmes

29. The following oral health promotion programmes are preventative programmes of tooth decay and reducing the risk of dental treatment.
30. First Dental Steps, an NHS England funded programme for the first 12 months, has been underway in Wiltshire. All Health Visitors have received Oral Health Champion training and are providing oral health promotion advice and guidance to all families who engage in their child's mandated 9-12 month check-up. Each family is provided with an age-appropriate oral hygiene pack; toothpaste, toothbrush and 'sippy' cup for the child. Children that meet a specific criterion, i.e. a sibling who has had a previous dental extraction, will have a direct referral to an NHS dentist.
31. First Dental Steps is an evidence-based programme following a previously successful pilot in the South West. Therefore, there are plans for this programme to continue to be funded in Wiltshire. Work is underway to extrapolate this data to understand the outcomes being achieved. There is also continued commitment of this programme in Wiltshire utilising local oral health promotion funds.
32. The supervised toothbrushing programme, is a two year evidence-based NHS England funded programme, providing children in early years settings and Reception class, to participate in daily toothbrushing. It is currently available to settings in Index of Multiple Deprivation areas of 1-6. Each school and early years setting is provided with age-appropriate toothbrushes and toothpastes, along with

guidance on how to incorporate the activity into the daily routine. Additional oral health education sessions can be provided to families through the provider of the programme, At Home Dental.

33. The number of eligible settings in Wiltshire is 79, of which 76% have signed up to the programme and are involved in the delivery of the programme, and 16% of schools have declined. The remaining schools are still being contacted to offer the programme. There are plans to continue funding this programme beyond the current pilot and to consider expansion of the criteria.
34. A proportion of the £300,000 oral health promotion money, as previously mentioned, will fund oral health promotion training across the dental workforce, for those who have a dental background and will support in their roles to deliver oral health promotion work. It will also fund Oral Health Champion training, which is a basic level training on oral health and will provide learners with information about local NHS dental services and care pathways.
35. Over 300 oral hygiene packs have been purchased and been distributed through a range of mechanisms over the last year; Larkhill dental clinics, food banks. As part of this, 'making every contact count' conversations have taken place to encourage attendance at a dentist and good oral hygiene practices.
36. This year, the ICB has also set out to deliver dental checks for all residential special educational settings across BSW. Currently, the ICB is awaiting on further National guidance and service delivery information and are hopeful this will be provided following the pre-election period.
37. Opportunities to embed and integrate oral health into care pathways is currently being scoped. Early collaborative working between Wiltshire Public Health and Salisbury Foundation Trust are scoping the importance of integrating oral health messaging and dental signposting as part of antenatal care pathways.
38. An oral health communications plan is currently being developed to share evidence based oral health messaging and align this messaging with other public health campaigns and integrate it within care pathways to promote the importance of accessing a dentist and good oral hygiene practice.
39. The Public Health team are considering ways to integrate oral health into existing programmes of work, such as Phunky Foods; a healthy cookery and lifestyle programme for Wiltshire Primary Schools. Oral health resources and messaging linked to healthy diet has been integrated into the programme.

Environmental impact of the proposal

40. The Child Friendly Dental Practice pilots were able to demonstrate an estimated environmental impact of 5.6 metric tonnes of CO₂ avoided, approximately 14,200 miles were avoided across the South West through the use of these pilots.
41. As the priority focus of this work has been on improving access there is a need to ensure dental services are more accessible to populations, so does require the need for a provider to travel.

42. As programmes of work are scoped there will be a consideration of the environmental aspect within the planning.

Equality and diversity impact of the proposal

43. This paper highlights the range of vulnerable population groups that are being considered as part of the planning for oral health and dental care programmes. It also includes those who have received tailored dental care as part of outreach programmes; homeless populations, resettled families, children living in the most deprived areas in Wiltshire.

44. The planning of dental care and oral health programmes in Wiltshire are in line with the Core20PLUS5 health inequalities framework.

45. There is work being scoped on gaining further insight of population need for dental care and oral health promotion programmes, specifically adults with learning disabilities, and Travelers. There are plans to further this insight work with other population groups.

Risk assessment

46. As each programme of work underpinned by the 3 key priorities for Wiltshire dental care and oral health is scoped and developed, a risk assessment will be undertaken which considers the financial impact, the capacity within the system to support the programme of work, and the impact on health inequalities of aiming to reduce the gap.

Financial implications

47. The report provides a retrospective review and assurance on the work that has been undertaken to date and does not provide any scope on indicative or future proposals with any financial implications.

Legal implications

48. Local authorities have a statutory function to provide or commission oral health promotion programmes. It will be the first financial year (2024/25) that Wiltshire Public Health team will have the allocated oral health budget to fund this work specifically, and now with additional funding from the dental care underspend.

49. From April 2023, ICBs have delegated commissioning responsibility for NHS dentistry.

Conclusion

50. The access to NHS dentistry remains a high priority, as does the oral health needs for our children and young people, specifically early years, SEND and looked after children. The ICB and Wiltshire Public Health team are working collaboratively to improve dental care access and improve oral health outcomes, therefore preventing and reducing pressure on our Acutes. Further work is needed in Wiltshire, but progress is being made to improve these outcomes.

Kate Blackburn
Director of Public Health

Jo Cullen
Director of Primary Care

Report author(s):

Katie Davies – Public Health Principal, Health Improvement

Victoria Stanley – Head of Primary Care POD

Date of report: 09 July 2024

This page is intentionally left blank



Voice and Participation Service Annual Report 2023 - 2024

Prepared by

Joe Sutton
Participation Manager



HIGHLIGHTS



During the Year 2023 – 2024, the Child and Youth Voice Team expanded to become the Voice and Participation Service.

Workstreams of the new service include: Children and Young People’s Voice (Social Care), Family Voice (Social Care), SEND Voice (Health, Education, Social Care), IV Scheme, Community Mentoring, Primary Mentoring, Transitional Mentoring, Appropriate Adults and Referral Order Panel Members.

The team has also been working towards setting up new workstreams that go live in April 2024 these include:

An In-House Advocacy Service, Young Carers in Schools, Young Carers Voice and Young Carers Advocacy

The team was a finalist of the CYPN Social Care Team of The Year Awards which is a massive achievement as we have only been formed for less than 3 years.

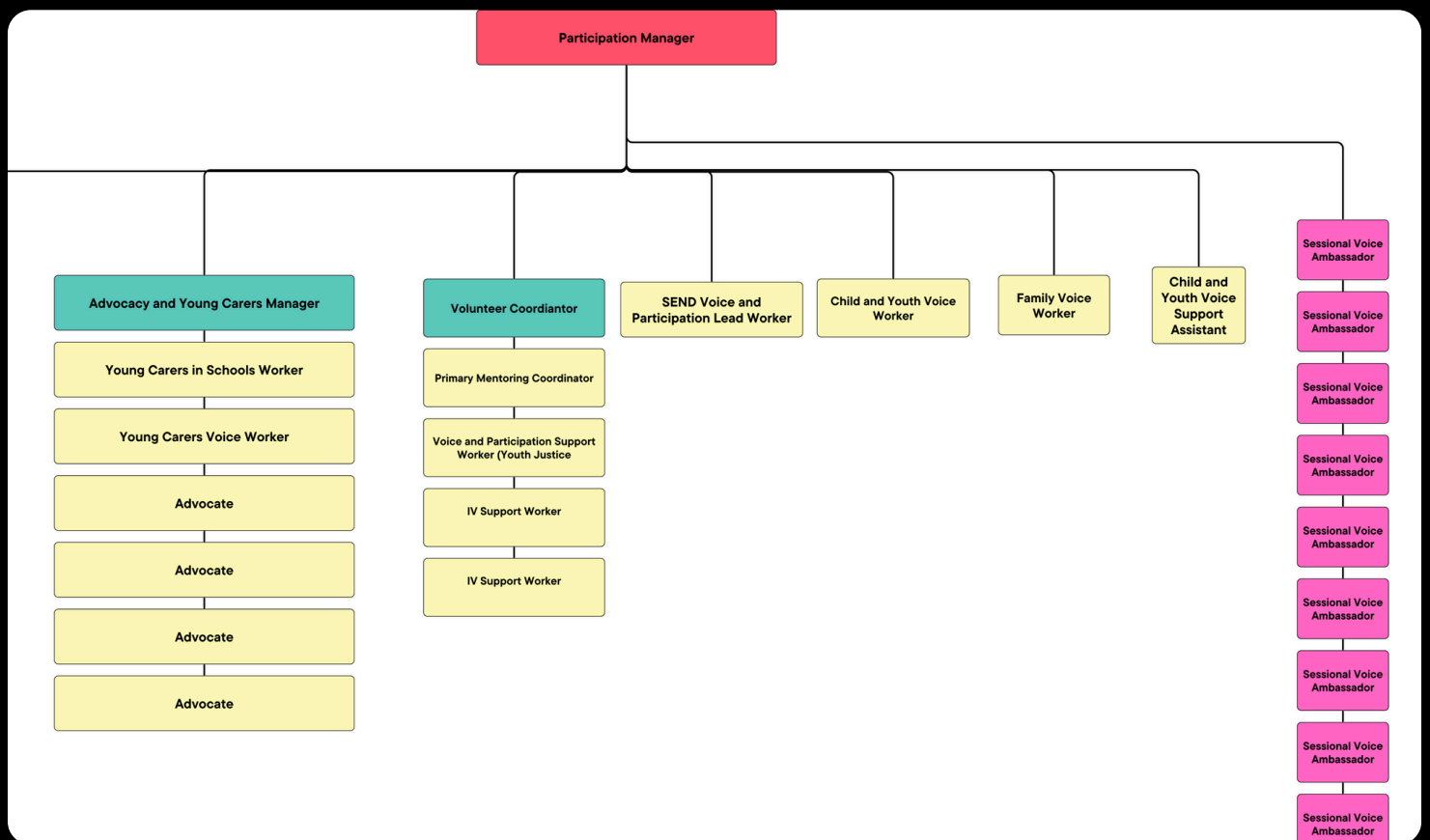
The Child and Youth Voice Worker Cameron Draisey Won the Frontline Award for Young People. He was recognised for his ability to use his own experiences to build relationships with children and young people, attain their views and coproduce services.

During the past year the team has been recognised for the impact of the work it has achieved. Feedback from the 2023 ILACS Ofsted report states:

‘Children in care and care leavers take part in a regular programme of activities to help increase their confidence and life skills, influencing how services and support are developed and provided. They are involved in creative projects such as a podcast to help other children understand what it is like to be in care as well as in the recruitment of staff.’...

‘The views and experiences of children and parents are being listened to by political and children’s services leaders and acted upon. A significant and ever-growing number of children, parents and carers are actively involved in an extensive range of meaningful participation activities and forums which have informed strategic plans and led to positive changes in operational practice and service development. These include the creation of a new care leavers’ young parent group, a young people’s fostering panel consultation group, parents designing the Wiltshire ‘family promise’ and the creation of the new family advisory board.’ (Ofsted, 2023)

VOICE AND PARTICIPATION SERVICE STRUCTURE



FAMILY AND CHILDREN'S SERVICES



Children in Care Council

This section provides an overview of the activities, achievements, and feedback received from the CiCC during the period of April 2023 to March 2024. The Voice and Participation Service aims to support and develop the CiCC by building trust, meaningful relationships, and confidence among participants whilst actively engaging them in improving services and enhancing their overall well-being.

Attendance and Recruitment:

- Over the year, 43 different children in care participated in CiCC sessions, consisting of 25 females and 18 males. Whilst this is a decrease from last year, where we had 48 different members, this is reflective of our increased focus on voice sessions and that we have a group of consistently engaged young people.
- Additionally, 31 new CiCC members were recruited during this year, reflecting the growing interest and engagement among children in care.
- A lot of those who attended in the previous year were older and moved on due to the 8-17 threshold. The addition of 31 is a great achievement reflecting the recruitment of new, younger members.
- The average age of attendees was 15 years old. The age range was 8 years old to 21 years old. With the older cohort who are 18+ not attending the groups but supporting with initiatives such as the Foster Carer Panels and interviews.



ACTIVITIES AND ENGAGEMENT

-The team organised and facilitated a diverse range of activities in collaboration with council leisure facilities, community partners, and charities.

-Noteworthy activities included climbing, water sports, adventure days, lazerquest, and two residential experiences, PGL in July 2023, two hosted during Autumn Half-term and the February half term with 'Go Beyond' in Cornwall. In addition, a PGL residential in June 2024.

-These experiences aimed to provide opportunities for personal growth, skill development, and fostering positive and meaningful relationships. Once these skills and relationships have been made this gives the participants confidence to take part in voice and co-production initiatives.

"I get to meet people like me and make new friends"

CICC CONTRIBUTIONS

- CiCC members actively contributed to improving services by participating in young person interview panels for senior leader positions, ASYE Social Workers, and applicant foster carers.
- CiCC Members have had the chance to meet with Senior Management including Directors and Heads of Service, this occurs quarterly at our thematic 'meet your leaders' sessions



CiCC Committee

The CiCC Committee produces podcasts to amplify children in care's voices. Meetings are held monthly at the Care Leavers Hub, offering a safe space with activities. The Hub facilitates 1 on 1 discussions for young people to share experiences, especially beneficial for those who are young or neurodivergent.

Efforts to boost children in care's confidence have increased their engagement levels, leading to more meaningful contributions. The CiCC Committee has created a more inclusive environment for children, promoting active participation and reflection. Regular podcasts allow children to share their perspectives, educating the community. The committee fosters a sense of community and wellbeing among care-experienced individuals.

VOICE AMBASSADORS

The Voice and Participation Service involves individuals who have received support from Families and Children's Services in co-production efforts. Sessional Voice Ambassadors, employed or volunteering, provide feedback, training, and support under supervision. Wiltshire Council has Care-experienced Voice Ambassadors, offering employment opportunities and enhancing inclusion. Voice Ambassadors contribute to service improvements, receive meaningful compensation and professional work experience, access training, and participate in the Corporate Parenting Panel, increasing attendance at meetings.



The impact of Voice Ambassadors initiatives:

- Corporate Parenting Panel: Enhances communication with young people in care.
- Dragons Den on CPP Priorities: Scrutinises Strategic Priorities ensuring people with lived experience are telling us how we are doing.
- Voice Ambassadors in ASYE Interviews: Involves lived experience in social worker recruitment.
- Speaking at Conferences: Provides insights and learning to professionals.
- Delivering Training: Empowers Voice Ambassadors to share experiences with the wider workforce.
- Young Persons Fostering Consultation Panel: This empowers both applicant foster carers by providing insights from those they will potentially support and Voice Ambassadors by involving them in decision-making processes.
- Meeting with OFSTED: Provide insights into care experiences during the 2023 ILACS inspection.
- Interviews for senior leader positions: Involves lived experience in recruitment and having a real say in who is employed

Last Year's

MIND OF MY OWN



The Mind of My Own app is a highly effective tool designed to engage service users who are under the care of a Social Worker or Family Key Worker.

The Mind of My Own app offers a secure and supportive platform for young individuals to explore their thoughts, emotions, and personal experiences. Its innovative features and user-friendly interface make it an exceptional tool for promoting mental health, self-awareness, and overall resilience among young people. By actively involving them in their well-being, the app empowers individuals and establishes a valuable connection between them and their social workers, fostering open communication and collaboration.

In the coming year Mind of My Own will be deployed in the new advocacy service to help children and young people to contribute to the meetings more effectively

The 'My Life' statement type is the majority sent, demonstrating that young people feel that it is important to share with their workers the experiences that they are facing in life. Within the 'My Life' Statements in the last year (April 2023 to March 2024)

- 88 young people reported feeling 'Happy' where they live.
- 26 reported that they felt unhappy

When completing 'My Wellbeing' Statements Young People expressed that in order to feel happy they need access to the following:

- An adult I can trust
- Someone who loves me for who I am
- Someone I can talk to
- Somewhere stable to live

Mind of My Own Data

147 young persons' accounts were created on the app.

A total of 647 statements were exchanged between young individuals and social workers.

Efforts are being made to address the decrease in app usage, including attending team meetings, providing monthly updates, training via Oracle, and developing an e-learning package for staff accessibility.

147

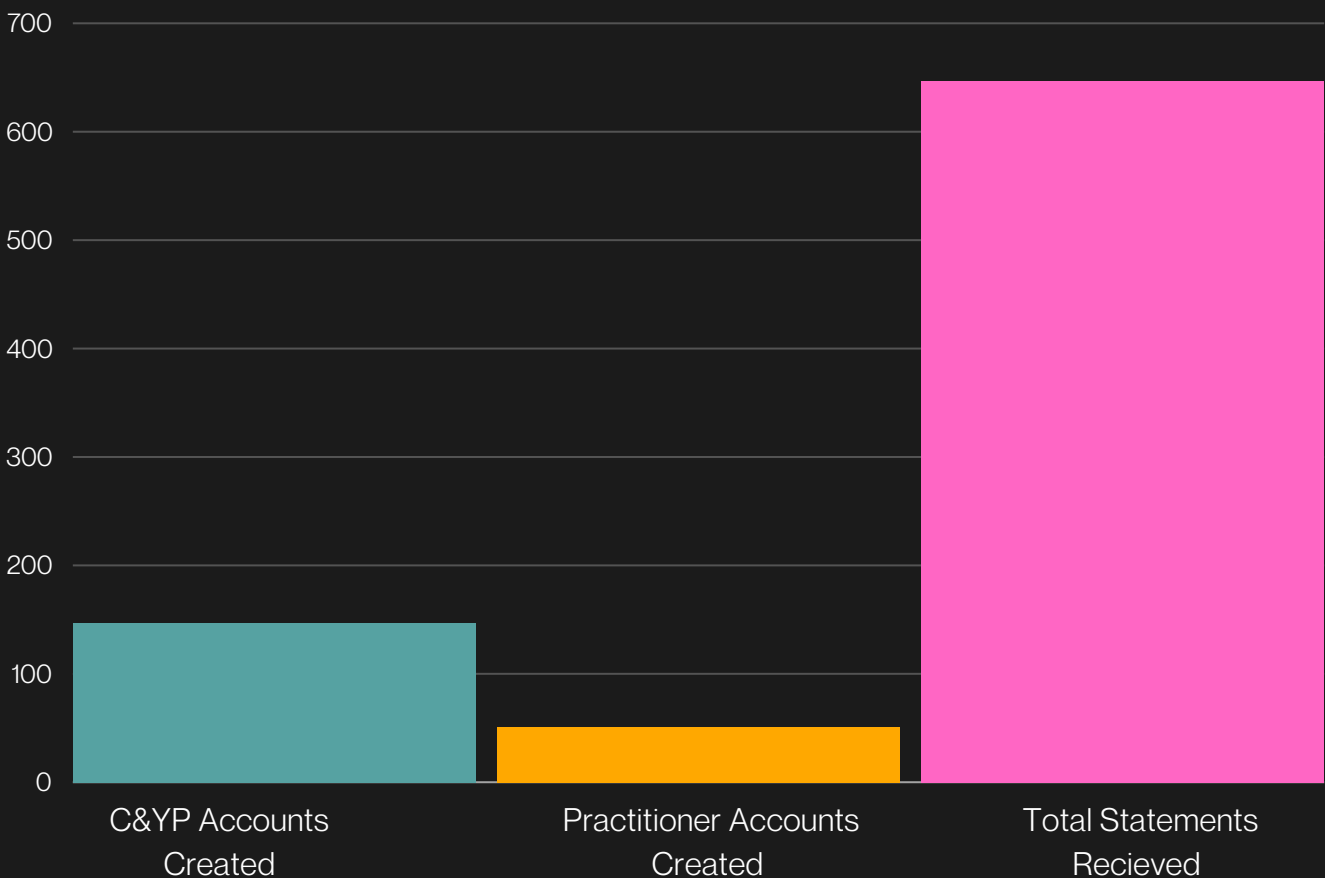
C&YP Accounts
Created

51

Practitioner Accounts
Created

647

Total Statements
Received



BRIGHT SPOTS SURVEY



The Bright Spots survey initiative procured by Wiltshire Council and developed by Coram Voice and the University of Oxford aims to capture the voices of children in care and care leavers. The project seeks to understand their needs and experiences, informing policies for better support. The surveys underwent coproduction with service users, and the data will be used to enhance well-being and support systems. The project includes stakeholder engagement, data collection, analysis, and integrating survey results into actionable strategies. The survey reports will be used to improve services based on feedback and will be presented at the Corporate Parenting Panel. The surveys aim to assess subjective well-being and identify areas for improvement, with benchmarking against national averages.

Age Group	Total number of YP	No. of recorded responses	Number of declined responses	Response rate
4 - 7	36	13	1	36%
8 - 11	40	27	1	68%
11 - 17	301	92	0	31%
18 - 24	316	102	1	32%
Totals	693	234	3	38%

WILTSHIRE YOUTH COUNCIL



The Wiltshire Youth Council (WYC) is an elected group of pupils from Wiltshire Secondary Schools dedicated to amplifying the voices of young people in Wiltshire and ensuring their perspectives influence local decision-making. It engages in various activities to promote youth involvement in community life.

Wiltshire Youth Council Elections

the latest round of elections for the Wiltshire Youth Council took place from Monday, January 29th to Friday, February 2nd, 2024. These elections aimed to ensure that the voices of young people across Wiltshire are heard and represented in local decision-making. Special Advisors ensure representation of underrepresented groups such as young carers, children in care, LGBTQ+ youth, and military families.

Key Details:

- **Participants:** Young people from across the county, elected from 10 different schools and community seats.
- **Outcome:** 29 young people were elected as Wiltshire Youth Councillors.
- **Responsibilities:** The elected councillors will meet with Wiltshire Council leaders, work with area boards, review services, and represent their peers' views. They commit to attending monthly meetings and engaging in various youth council activities.
- **Special Roles:** Elections also included positions for Members of Youth Parliament (MYP) and the Head Secretary.

Healthy School Auditors

- **Purpose:** Conduct health and wellbeing audits at schools to assess their efforts in promoting these aspects among students.
- **Activities:** School tours, pupil focus groups, and head teacher interviews.
- **Feedback:** Provided to schools on their health and wellbeing initiatives.
- **Awards:** Presented during school assemblies to schools excelling in health and wellbeing efforts.
- **Future Plans:** More audits scheduled for June 2024.



Mental Health First Aid

The Mental Health First Aid initiative equips Wiltshire Youth Councillors with skills to support peers' mental health. Training includes identifying signs, providing initial support, and guiding peers to professional help. Councillors establish peer support groups and share insights on mental health issues to enhance awareness and support among young people in Wiltshire.

Health Hygiene Product Campaign

The Hygiene Product Campaign by Wiltshire Youth Council aims to address hygiene product access issues among students. It focuses on raising awareness, providing various hygiene products, organising donation events, and collaborating with charity Re-Fresh.

Members of Youth Parliament

A Member of Youth Parliament (MYP) is a young representative elected to the UK Youth Parliament to advocate for the interests and views of young people in their constituency. Here are key aspects of the role:

Role and Responsibilities

- **Engage:** Actively involve young people through Youth Council and MYP activities, and participate in local, regional, and national campaigns.
- **Promote:** Highlight the work of the UK Youth Parliament and Wiltshire Youth Council, report back on activities, and communicate through appropriate channels, including social media.
- **Represent:** Speak on behalf of young people in their area, take their views to Youth Parliament sittings, and participate in votes on national policy issues.
- **Skills Development:** Enhance skills such as communication, public speaking, organization, negotiation, debating, teamwork, and leadership.



Activities and Commitments

- **Meetings and Events:** Regularly meet with other youth councillors, participate in UK Youth Parliament meetings and events, and engage in consultations.
- **Campaigns:** Work on campaigns that address issues important to young people, such as the 'Food for Learning Bill' focusing on free school meals.
- **Training and Support:** Receive training in various areas to support their role, including debating and youth advocacy.

Election and Term

- **Eligibility:** Any young person elected to the Wiltshire Youth Council can stand to be an MYP.
- **Term:** MYPs serve a one-year term, representing different regions such as North, East, and West Wiltshire.

By participating in the Youth Parliament, MYPs play a crucial role in ensuring that the voices of young people are heard at local and national levels, contributing to policies and initiatives that impact their peers.

FAMILY VOICE



The primary objective of the family voice work is to bolster the engagement and participation of families in the design and development of services provided by Wiltshire Council. By directly involving families, we aim to integrate their voices into our quality assurance framework, reinforcing our commitment to delivering services that align with their needs and preferences.

Community Care Live Workshop

During the session, the key aspects of participation, co-production, and relationship-based intensive work in family and children's services were focused on. Attendees gained valuable insights from the experiences and initiatives of Wiltshire Council's Family Voice, Dad's Matters Too, and the Born into Care Project.

Through presentations and interactive discussions, participants understood the importance of involving people with lived experience in decision-making processes and the positive outcomes that could be achieved through relationship-based approaches.

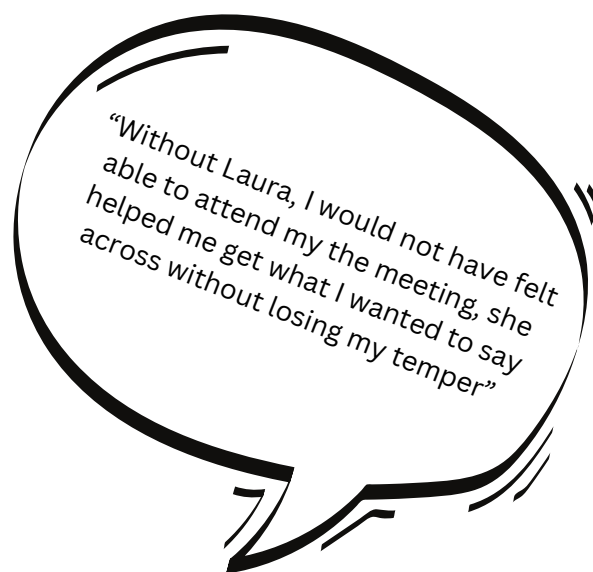
The session was recorded and later released as a podcast episode, fostering active engagement and deeper understanding of the topics discussed. Additionally, a question and answer session allowed attendees to seek clarification, exchange experiences, and gain practical insights from speakers and fellow participants.

Family Advisory Board

- The Family Advisory Board has been convened on a monthly basis since November 2023.
- Comprising five former service users referred from Child Protection Chairs, the FAB discusses specific themes each month, featuring invited guest speakers.
- Past meeting themes have included interactions with the Director of Children and Families Services, mental health impacts during assessments, leadership introductions, voluntary accommodation orders, and reviewing the use of the Pledge.
- The FAB is exploring collaborative opportunities with other agencies, including podcast participation and training initiatives like FearFree Working.
- Guest speakers are invited to FAB meetings to explore best practices and, when necessary, hold the local authority accountable.
- Efforts are underway to involve parents with lived experiences as experts, enabling them to contribute alternative ideas and solutions effectively.

Child Protection Parental Advocacy

- The Family Voice Worker has been supporting families as an Advocate. This approach helps the team to work alongside the family and hear the views of parents in real time, exploring issues to see if they are indeed systemic failures, enabling us to have a more rounded perspective of the situation as we are witnessing how parents are worked with.
- A referral form has been integrated into Liquid Logic to track progress before and after involvement.
- Action trackers are utilised with parents to capture their voices and understand their rights.
- Since January 2024, six families have been referred for parental advocacy, resulting in diverse outcomes, including complaints and transitions to Child in Need status.
- Progress has been achieved in enabling service users to voice their concerns effectively in CP meetings through impact statements.



Next Steps

1. Develop a comprehensive training package for social care staff, emphasising compassionate and knowledgeable service provision.
2. Enhance accessibility and readability of reports and documents, considering parental feedback.
3. Establish protocols for data security and redress mechanisms to address concerns raised by parents.
4. Explore the feasibility of implementing an Early Intervention Support Service tailored to meet the specific needs of families.
5. Foster collaboration with other agencies to expand support networks and improve service delivery.

SEND VOICE



The Voice and Participation Service has recruited a SEND Voice and Participation (V&P) Lead. Their role is to ensure that there is a joint up approach between Wiltshire Council and Partners to attaining the views of Children and Young People with Send and involving those people in coproduction activities.

Healthy School Audit - Silverwood

Pupils and staff at Silverwood School have achieved top marks for efforts to create a healthy school environment.

The school for children with Special Educational Needs and/or Disabilities received Wiltshire's Healthy Schools accreditation after making some changes that have had a positive impact.

Healthy Schools is a Wiltshire Council programme designed to effectively address the health and wellbeing of children and young people. Schools in Wiltshire are gaining awards for encouraging healthy lifestyles and wellbeing. Members of the Voice and Participation Service and the SEND Voice Ambassadors held focus groups and gave feedback to the school leadership about what students had told them.

Wiltshire Local Offer Website

The SEND V&P Lead collaborated with the Local Offer Officer from Wiltshire Council to analyse data on the Local Offer, resulting in positive feedback on its improvement and user-friendly website. A working group is creating videos for the Local Offer site, focusing on themes like employment and community inclusion based on user feedback and stakeholder input. The videos will feature parents, carers, young people, service providers, and information specialists.



SENDIAP Strategy

The SEND and Alternative Provision Strategy sets out the long-term plan of how Wiltshire Council will act on agreed priorities so children, young people and families with SEND or in alternative provision have the very best provision in Wiltshire.

The strategy will be influenced by feedback from Children and young people, SEND families, professional partners and staff. It will be a blueprint for the next five years setting out how we will approach and achieve the highest standards here in Wiltshire.

Engagement with key partners is a crucial part of shaping this key document to both gather views and to have a say in finalising the strategy.

The strategy is being worked on against a backdrop of challenge. This includes promotion of SEND Transformation Programme messages, the increase in the number of EHCPs in Wiltshire and the pressures on school places and assessments.

The teams role in the strategy:

- Encourage participation in the SEND and AP consultation.
- Share ongoing updates on the finalising of the strategy.
- Hold SHARE meetings to ensure partners are exploring key themes in a joint up way with service users.
- Close the feedback loop with service users and partners acting on the plan by having “you said we did” communication approach.

Key Points:

- Desired outcomes include putting children and young people (CYP) at the center of planning, understanding the importance of families as partners, and incorporating feedback into strategies.
- Consultations with children and families cover themes like the child and family's voice, right support at the right time, quality planning, preparation for adulthood, communication, and support for parents/carers.
- Professionals gathered to analyse feedback, establish vision, principles, priorities, and outcomes, with representation from social care, education, health, and WPCC.
- Activities during the event included presentations, group discussions, and planning for implementation based on current data and analytics.
- Collaboration focused on setting priorities, measuring progress, defining outcomes, and creating the SEND&AP Vision section for the strategy document.

SHARE

The first SHARE (Socialise, Hear, Achieve, Reduce, Explore) event took place on the 7th of May with 11 professionals attending from various services including: Commissioning, Local Offer, SEND Services, Wiltshire CIL and Pathway to adulthood.

Purpose of SHARE:

Purpose of the group is to SHARE work plans, projects, and engagement data. The group will cover a different theme each meeting. These themes will stem from the SEND strategy and be aligned with the SEND and AP board. Once a Theme is set, the group will co-produce a range of questions to use during their consultation period. These findings will then be recorded and forwarded to SEND Voice and Participation Lead who will collate them and disseminate them once the 3-month period is up. Each meeting will allow time to discuss how the data used to produce actions, which will be included in the report that is sent out.

The next meeting will be to decide our first theme and how we intend to conduct consultation work with young people and families around this theme.

Post 16 Deep Dive

To help improve Wiltshire's offer for children transitioning to adulthood the SEND Voice and Participation Lead has been conducting focus groups in schools and the community. The findings will be released in June 2024, the themes being explored are:

- Community Inclusion
- Independent Living
- Employment
- Health

Springfield Academy

Community Inclusion

Do you go to any after school clubs or sessions on in the community?

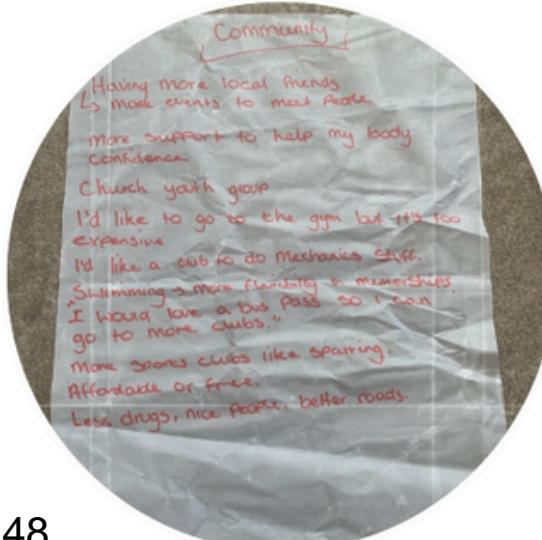
- I go to church
- I used to go swimming but I missed a couple of sessions and was told I'm not allowed back, having more flexibility in memberships would be helpful so don't miss because I have had a bad day
- I go to the gym because it helps me deal with my struggles with how I look.
- I would like to join the gym but it is too expensive.
- I would like to do something in mechanics to see if I want to do it as a job.

is there anything that stops you going into the community?

- Getting around is difficult as my parents cannot always take me to places
- I worry how people will view me when I am out as I struggle with my body image
- There is a lot of crime and I don't want to be around that
- People don't always understand my needs and treat me differently.

What do you think would help you access the community?

- More police patrols to stop gangs
- Better roads
- Less drugs and nicer, more understanding people.
- Having a bus pass so I can get around by myself
- Clubs being more affordable or even free
- Affordable gym passes.
- More local events so I can make friends who live closer to me.
- More sports clubs like sparring



Community

*Having more local friends
↳ more events to meet people*

More support to help my body confidence

Church youth group

I'd like to go to the gym but it's too expensive

I'd like a club to do mechanics stuff.

Swimming a more flexibility & memberships.

I would love a bus pass so I can go to more clubs.

More sports clubs like sparring.

Affordable or free.

Less drugs, nice people, better roads.



SEND Youth Forum

Following the consultation work, the team will be sending out an invite for young people to join a SEND Youth Forum. This group will have young people representatives from the multiple schools and community organisations which have already been visited by the SEND Lead Voice Worker.

Those organisations will support the participants to get involved in voice and coproduction initiatives organised by the Voice and Participation Service in line with the SHARE Events themes.

Creation and Delivery of Training

The SEND Lead Voice Worker will be working closely with the SEND Youth Forum and our SEND Voice Ambassadors to produce a training programme focused on how settings and services can positively gain participation and voice from their SEND young people. These training sessions will be held alongside the young people who have helped shape them, with ongoing follow-ups to assess the impact and outcomes.



FAMILY AND CHILDREN'S VOLUNTEERING



It has been a busy year for the volunteer team. In October 2023, the Youth Justice Service (YJS) volunteers were merged with the Independent Visitors volunteers, into the new Families and Children Volunteer Team. It has been a time of change in merging two teams with aligning training and processes. All credit to the staff and volunteers for how well they have adapted to the changes.

Volunteer Recruitment

Over the past year, we have recruited 44 new volunteers across the roles. Some of these volunteers are undertaking more than one role. This resulted in us having 26 new Independent Visitors, 10 Appropriate Adults, 10 Panel Members, 3 Primary Mentors and 6 Community Mentors.

We have spent a lot of time aligning our recruitment processes, this has resulted in the production of a volunteer registration pack that includes information about all of our roles along with a registration form for people to return. The team are now having monthly marketing meetings with Comms, to look at ways we can maximise reaching out to as many people as possible to become volunteers with us.

"My children are grown up now and I have more free time and I wanted to use some of it volunteering with young people and giving something back to the community."

Volunteer Training

The new revamped training consists of everyone completing a day's induction and half a day's safeguarding (plus some online training for Child Sexual and Criminal Exploitation). This is followed by role specific training. The Mentors and Independent Visitors have a further days training. The Appropriate Adults training consists of half a day, a custody tour and shadowing experienced volunteers. The Panel Members have a day's training and are buddied up with existing panel members.

"I was a child in care myself. As someone with lived experience of foster care, I am able to relate to the children and able to understand their perspectives."

Appropriate Adults



An appropriate adult is a person who supports and safeguards children during police procedures. They ensure the individual understands their rights and the process, providing emotional support and facilitating communication with the authorities. During the 12-month period, the Youth Justice Service received 105 AA call outs of which 98 were attended by our volunteer AAs. It has been a challenging time for the AA Scheme as Melksham Custody Suite closed for a revamp in February 2023 and is not planned to reopen until May 2024. This has resulted in the children being taken to Swindon Custody Suite following their arrest. A big thank you to all of the AAs who have kept the rota going by travelling to Swindon. Understandably, for some AAs it was too far for them to go and we look forward to welcoming them back to the role when Melksham reopens. Our first ever AA completed the National Appropriate Adult Network (NAAN) qualification. Congratulations to Di Menzies, this is a fantastic achievement and we hope to see more AAs complete the qualification in the future.



Independent Visitors Scheme

An independent visitor (IV) is a volunteer who provides consistent support, friendship, and mentorship to a young person in care, often one who has little or no contact with their own family. This role is designed to offer the young person a stable, positive relationship with an adult who is not part of the professional network surrounding their care. Here are some key aspects of an independent visitor's role:

1. **Consistency and Stability:** IVs provide a reliable presence in the young person's life, meeting regularly, usually once a month, to build a trusting relationship.
2. **Mentorship and Guidance:** They offer advice, encouragement, and support, helping the young person develop confidence and life skills.
3. **Activities and Outings:** IVs and the young people they visit often engage in enjoyable activities together, such as going to the cinema, sports events, or simply spending time together in a relaxed setting.
4. **Listening:** IVs listen to the young person's concerns and aspirations.
5. **Non-Professional Relationship:** Unlike social workers or care staff, IVs are volunteers, which allows them to build a more informal and personal relationship with the young person.
6. **Legal Right:** In the UK, under the Children Act 1989, local authorities are required to appoint an independent visitor for any young person in care who would benefit from having one, particularly if they have infrequent contact with their family or no family at all.

The goal of an independent visitor is to provide the young person with a sense of normalcy, support their emotional well-being, and help them feel valued and cared for outside the formal care system.

- In May 2023, a celebration event was held at County Hall to mark a significant milestone for the IV Scheme: reaching 70 children in care being matched to an Independent Visitor.
- By 31st March 2024, the IV Scheme achieved 80 matches. Changes within the team, particularly in how training and matches are conducted, have enabled us to train and match more volunteers. Over the past year, we have trained 28 IVs, of whom 1 is on hold and 3 were discontinued following the training.
- We have a number of children who are in out-of-county placements, some of whom have moved placements since being matched with their IV. Wherever possible, we have tried to maintain their IV visits, even if they occur quarterly instead of monthly. We have also managed to sustain reduced visits when there has been a change in circumstances, such as when the IV has moved away.
- For referrals regarding children living out of county, we contract with an IV Scheme in their area. Currently, we have one out-of-county match, with another in the pipeline.



30 NEW REFERRALS RECEIVED

This is an improvement from 2022 - 2024 where 28 referrals were received



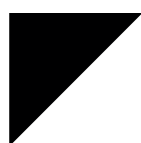
24 NEW MATCHES

The scheme has managed to match more children in care with IV's compared to last year when there were 20 matches



13 CLOSED MATCHES

There has been a slight increase in matches closed up from 10. This is mainly due to young people ceasing the relationship, however there are a lot more matches being formed than ending



A TOTAL OF 80 MATCHES

This is up from 63 in April 2023 which is an amazing growth.

IV Scheme Feedback



*I really like my IV as when I moved, I didn't have many friends but they made it feel like I had someone to talk to.
(Voice Ambassador)*

"The IV coming to visit has been invaluable to the young person over the last year as she has been really struggling with her personal and family relationships. Having an IV as a person just for her has incredible. She really gets on with her IV and has always had a great time when they have gone out together and they seem to share similar interests." (Foster Carer)

Referral Order Panel Members

Referral order panel members are volunteers who participate in the Youth Offender Panels established as part of the referral order system in the UK. This system is designed for young offenders, typically those between the ages of 10 and 17, who have committed a first-time, low-level offense and have pleaded guilty. The goal of the referral order is to help the young person take responsibility for their actions, make amends to the victim, and integrate back into the community in a positive way.

At the start of the year, our team encountered significant challenges due to a shortage of panel members. This led to existing members traveling beyond their local areas to cover panels across the county, and we appreciate their dedication. By enhancing our recruitment process and updating panel training, we have successfully increased the number of panel members. Our rolling recruitment program is ongoing to further expand our team.

The Referral Order Steering Group has been very active. Panel members in the group have revamped the panel handbook, which has been positively received and now serves as a comprehensive reference guide for new members on panel operations. These members have also taken charge of organising panel support meetings, gathering valuable feedback from members on their expectations for these gatherings. Additionally, we have introduced a WhatsApp group for additional support and implemented a buddy system for new members.



**54 INITIAL
PANELS**



**13 FINAL
PANELS**



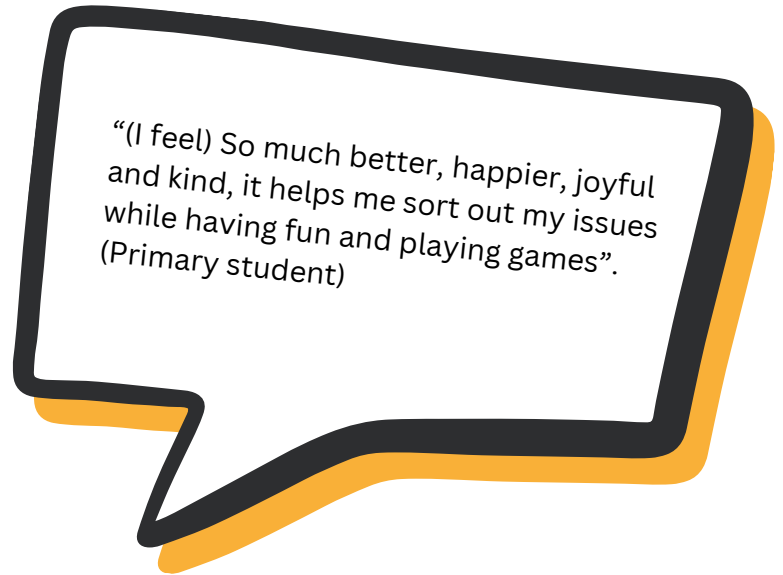
**48 REVIEW
PANELS**



**115 TOTAL
PANELS**

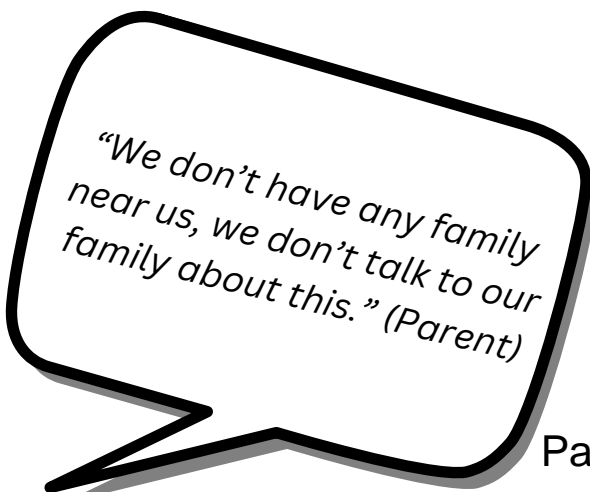
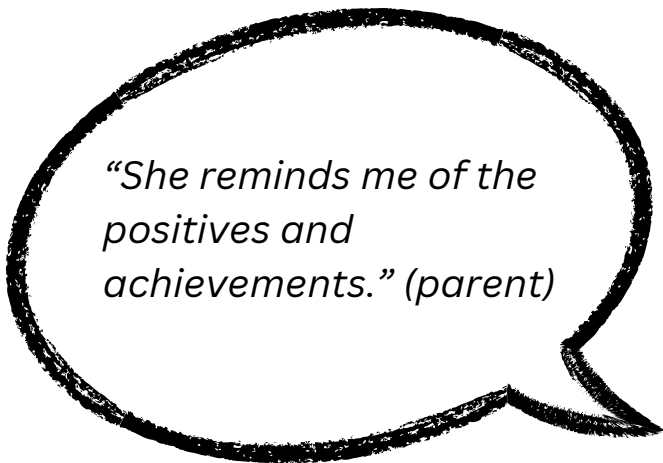
Primary Mentoring

The Wiltshire Primary Mentoring Scheme was set up in 2016 as part of the CAMHS (Child and Adolescent Mental Health Services) Transformation Plan. The aim of the scheme is to improve the resilience and emotional wellbeing of children by providing a preventative early response to potential/emerging social, emotional, and mental health difficulties by helping them to build resilience, improve their wellbeing and achieve their goals and aspirations. Primary Mentoring was carried out in 11 schools across Wiltshire by 13 mentors. 53 children were supported over a total of 736 sessions.



Parent Mentoring

The funding for the parent mentoring program has been discontinued. This program aimed to assist parents of exploited or at-risk children. The mentors offered a non-judgmental approach, aided parents in finding solutions to manage difficult situations with their children, and offered them a break from their home environment. Throughout the year, we provided weekly support to seven parents who were paired with mentors. During the year we supported 7 parents once a week who were matched with mentors.



Transitional Safeguarding Mentoring

"I really like mentoring and it really helps. I can tell A literally anything and everything and she won't judge me. I don't have this with my own parents. When I see A, it is the best thing that happened to me that day! My mentor is honestly the kindest person I have met, always really easy to talk to, she genuinely cares and whenever I faced difficulty she was always there to guide me. Truly a lovely human being and I will miss her!"

The Transitional Safeguarding Mentoring Scheme was set up as part of the wider FACT Transitional Pilot to sit alongside existing services to provide informal, relationship-based support to individuals aged 16-25 years. The aim was to match young people who were known to:

- be engaged in, or vulnerable to criminal and/or sexual exploitation
- be involved in County Lines
- be displaying chaotic risk-taking behaviours
- not be expected to meet the threshold for adult services


The scheme came to an end on 31/03/2024. Over the last year, we matched 6 young people

Community Mentoring


Community mentors support children aged 10-17 years who are involved or who are at risk of offending behaviour and/or exploitation. The mentors meet with the mentee in the community, once a week for about an hour. The mentors support the mentees to work towards goals, be a listening ear, working through issues, develop their life skills, increase their confidence, self-esteem, and motivation. They achieve this through various activities which could be from going for something to eat to doing something active or getting creative. The mentoring agenda is led by the mentees. Towards the end of the period we revamped our Community Mentoring Scheme including our referral criteria. We now only take referrals from the Youth Justice Service and the Emerald Team. This has enabled us to become more targeted with the mentoring scheme. We have introduced consultation sessions for referrers to be able to discuss potential children to refer. We have also aligned our matching process with the IV Scheme ensuring consistency across the two volunteer roles. Over the past year 12 children have been supported through community mentoring.

"My mentor helps with talking and trusting me, She was nice, helped me get out of the house."


Family and Children's Volunteering Next Steps



Setting up a Volunteer Leaders Group to Support with Planning and Peer Support



Increasing the Number of Volunteers by Facilitating a Recruitment Campaign



Recruit a Voice and Participation Support Worker to help Children in Custody at an Earlier Point and to Lead on Youth Justice Voice Work



Assist in the Recruitment and Training of Volunteer Advocates

VOICE & PARTICIPATION SERVICE FUTURE WORK 2024 - 2025

Young Carers

In the upcoming year, the Voice and Participation Service in Wiltshire is poised to implement three roles aimed at elevating outcomes for young carers.

Young Carers Voice Worker

The Young Carers Voice Worker is anticipated to be a linchpin in empowering young carers actively involving them in the development of youth-led services. This includes the establishment of the Young Carers Council, driving innovative changes, producing comprehensive reports based on invaluable feedback, and implementing action plans derived from the insights of young carers. Moreover, efforts will be directed towards promoting youth-friendly consultation materials, and disseminating positive stories through strategic social media campaigns, thereby establishing a robust platform for impactful youth-led services.

Young Carers Schools Worker

Looking ahead, the role of the Young Carers School Worker is projected to play a pivotal part in supporting schools to attain the Young Carers in Schools Award, with a specific emphasis on secondary school provision. Responsibilities will encompass collaborative efforts with school staff to identify young carers, provision of training sessions for staff, and facilitation of workshops for students. The focus will also extend to the development of personalised support plans, advocacy for young carer-friendly policies, organisation of activities promoting wellbeing, and vigilant monitoring of the impact of support initiatives.

Young Carers Advocate

We are recruiting a Young Carers Advocacy Worker to champion the rights and needs of young carers on an individual basis. Responsibilities will include guiding young carers through complex systems, advocating for seamless access to services, and empowering them through educational sessions. The role will also involve effective communication with professionals in schools, healthcare, and social services, along with the mediation of conflicts and the recruitment and training of volunteer advocates. Rigorous supervision and guidance for volunteers, coupled with coordinated oversight of their efforts, are envisioned to ensure alignment with organisational goals and ethical standards. The upcoming year holds the promise of a comprehensive and impactful approach towards positively influencing the lives of young carers in Wiltshire, as reflected through the strategic implementation of these innovative roles within the Voice and Participation Service

In House Advocacy Service

We are in the process of establishing an in-house Advocacy Service set to launch in July 2024. The goal is to shift from an external provider to an in-house model to better meet the needs of the people we support and enhance service quality. Advocates currently under contract will transition to us under a TUPE arrangement. Additionally, we will recruit Volunteer Advocates whom we will train to foster enduring relationships with those they support, similar to the IV scheme, promoting trust and open communication. This method aims to identify common issues, encourage sharing experiences, and gathering insights from a broad group of service users. We will also offer training to pastoral workers in schools who have a trusting relationship with the children they work with and wish to support them as an advocate.

To help set up the Young Carers and Advocacy initiatives we have recruited an Advocacy and Young Carers Manager who will ensure that the schemes are set up to a high standard.

With Thanks

I want to express my gratitude for the dedication, passion, and determination shown by the team members of the Voice and Participation Service.

This past year has been marked by significant growth and change, during which the team has provided wholehearted support, often going above and beyond their duties to achieve positive outcomes for those supported by Wiltshire Council.

I also want to extend my appreciation to all the individuals who have participated in voicing their thoughts, generously giving their time to enhance services for many. Their courage and inspiration in sharing personal experiences aim to bring about positive changes within the system.

Recognition should also be given to decision-makers who attentively consider and act upon the feedback they receive. Lastly, a special acknowledgment goes to the workers who undertake the challenging task of safeguarding the vulnerable while striving to maintain a relationship-based approach in their work.



Presentation of Priority 5 & Voice & Participation Annual Report

Page 61

Wiltshire Council



Organisational Context

- Voice & Participation Services sits **with Quality Outcomes Services** alongside other Sector Led activity, quality assurance and safeguarding provision including Conferencing & Reviewing Services, Auditing and Partnership Arrangements.

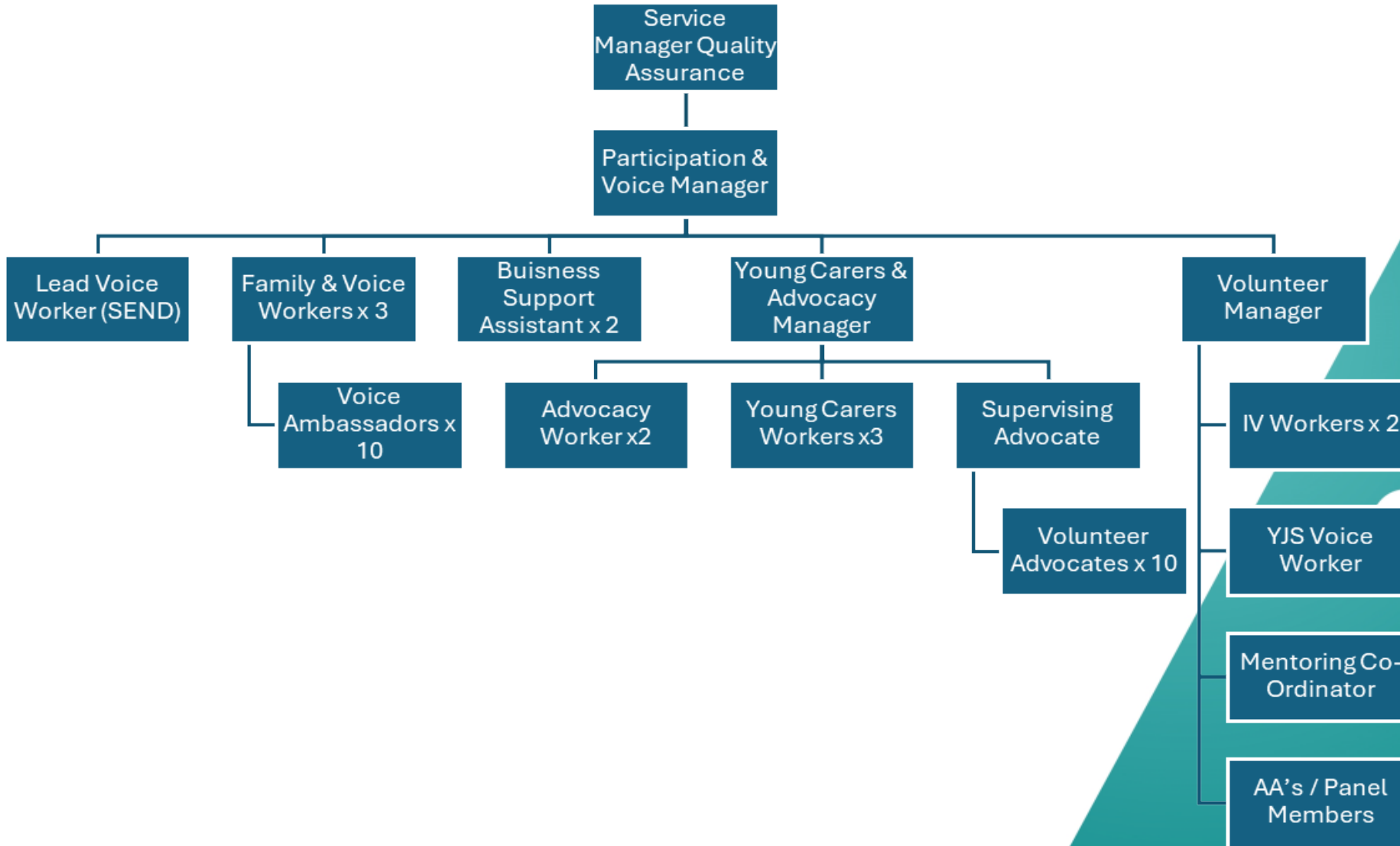
Page 62

This Service is separate from operational social work provision and is focused on support and challenge to ensure effective provision to children and their families. This enables independent scrutiny and collaboration through restorative challenge and support and independent voice.

- **Voice & Participation Team**; and is responsible for providing independent voice to our young people and families.
- Alongside employed advocates and voice workers the Service supports volunteers, ambassadors and sessional workers.



Organisational Structure: Voice & Participation



Service Delivery & Impact

'A significant and ever-growing number of children, parents and carers are actively involved in an extensive range of meaningful participation activities and forums which have informed strategic plans and led to positive changes in operational practice and service development. These include the creation of a new care leavers' young parent group, a young people's fostering panel consultation group, parents designing the Wiltshire 'family promise' and the creation of the new family advisory board.' (Ofsted, 2023)

- Children In Care Council
- Youth Council & Youth Democracy
- Voice Workers – Young Peoples
- Mind of My Own & Bright Spots Annual Survey
- Family Voice & Family Advisory Board
- SEND Voice
- Volunteering & Mentoring – appropriate adults, Independent Visitors, Mentors
- Voice Ambassadors – Sessional Workers with lived experience
- Advocacy Provision
- Young Carers Voice & Advocacy
- YJS Voice & Panel Members



What are we proud of

Primary Mentoring was carried out in 11 schools across Wiltshire by 13 mentors. 53 children were supported over a total of 736 sessions.

Independent Visiting Scheme has 80 successful matches; with 24 new matches this year following 30 referrals to the team

The new **Families and Children Volunteer Team** have recruited 44 new **volunteers** across various roles (some of these volunteers are undertaking more than One role)This resulted in us having 26 new Independent Visitors, 10 Appropriate Adults, 10 Panel Members, 3 Primary Mentors and 6 Community Mentors.

Recruited a **SEND Voice and Participation (V&P) Lead** to ensure a joint up approach between Wiltshire Council and Partners to attaining the views and involving them in coproduction activities.

Mind of My Own - 147 young persons' accounts were created on the app. A total of 647 statements were exchanged between young individuals and social workers.

The team was a finalist of the CYPN **Social Care Team of The Year Awards** & The Child and Youth Voice Worker Cameron Draisey Won the Frontline Award for Young People.

43 different children in care participated in **CiCC sessions** with 31 new members recruited, reflecting the growing interest and engagement



Areas of focus moving forward

- Maintaining momentum with **Mind of My Own**
- Development of **Young Carers Voice**
- **SEND Voice** to drive strategic plan
- Delivery of **Independent Advocacy** Provision from July 2024
- **Bright Spots Survey** results dissemination to shape operational and strategic priorities for 2025/26
- Increasing the Number of Volunteers by Facilitating a Recruitment Campaign
- Strengthen our Youth Democracy offer to ensure activate participation in Youth Council



This page is intentionally left blank

School Ofsted Judgements

1. This report is a regular update for the **Children's Select Committee** and is focused upon Ofsted inspections in Wiltshire schools.
2. The report shows details of schools inspected and provides updates on inspection judgements based on the inspection framework introduced in **September 2019** using the categories below:
 - Overall effectiveness
 - Quality of education
 - Behaviour and attitudes
 - Personal development
 - Effectiveness of leadership and management
 - Early years provision
 - Sixth form provision

Inspections explained

3. A change took place in September 2022 from what had been defined previously as Section 8 and Section 5 inspections with the revised Ofsted handbook providing information about what are now termed **graded**, **ungraded** and **urgent inspections** of maintained schools and academies under sections 5 and 8 of the Education Act 2005.
4. Graded inspections use the full Ofsted framework and will grade the school for its Overall Effectiveness and against the key judgements grade descriptors as described in the Executive Summary above; this has remained unchanged from September 2022.
5. Ungraded inspections focus on determining if the school remains at the same grade as the previous inspection. This does not result in a graded judgement. The key areas of focus in these inspections will be:
 - The Quality of Education and Safeguarding (as in a graded inspection)
 - Behaviour
 - Gaming and off-rolling
 - Pupils' wider development: breadth of curriculum (beyond academic, vocational or technical) / SMSC / careers provision (secondary schools)
 - Workload

Update

6. Published inspection outcomes of all schools – reports received between 1st June 2024 to 10th July 2024, these are collated below.

Published reports & date	Type of school	Previous Ofsted	Current Ofsted
PUBLISHED: UPDATED Ofsted report - Derry Hill CofE VA Primary School 5-6 March 2024	Maintained	OS	RI
PUBLISHED: Ofsted report - Lacock CofE Primary School 8-9 May 2024	Maintained	RI	Good
PUBLISHED: Ofsted report - The Avenue Primary School and Children's Centre (academy) 30 April - 01 May 2024	Academy	Good	Good
PUBLISHED: Ofsted report - St Augustine's Catholic College (academy) 30 April - 01 May 2024	Academy	RI	Good
PUBLISHED: Ofsted report - Ludwell Primary School (academy) 16-17 April 2024	Academy	N/A	Good
PUBLISHED: Ofsted report - Luckington Community School 09 May 2024	Community	Good	Good
PUBLISHED: Ofsted report - Wellington Eagles Primary Academy 5-6 March 2024	Academy	N/A	RI
PUBLISHED: Ofsted report -Lydiard Millicent CofE Primary School 12-13 June 2024	Academy	Good	Good but declining
PUBLISHED: Ofsted report - Westbury CofE Junior School 21 -22 May 2024	Maintained	Good	RI
PUBLISHED: Ofsted report - Baydon St Nicholas CofE Primary School 23-24 April 2024	Maintained	Good	Good
PUBLISHED: Ofsted report - Zouch Academy 4-5 June 2024	Academy	Good	OS
PUBLISHED: Ofsted report - Five Lanes CofE VC Primary School 11-12 June 2024	Maintained	RI	RI
PUBLISHED: Ofsted monitoring inspection report - Avon Valley Academy 06 June 2024	Academy	RI	RI
PUBLISHED: Ofsted report - Bowerhill Primary School 11-12 June 2024	Academy	RI	Good
PUBLISHED: Ofsted report - Winsley CoE VC Primary 4-5 June 2024	Academy	N/A	Good
Total reports published during this time = % good or better	66% 10/15		

Lacock Ofsted report: “The school, with the support of governors and the local authority, has made significant improvements since the previous inspection.”

Westbury Juniors Ofsted report: “Following a period of significant turbulence at Westbury Church of England Junior School, there is a tangible sense of stability and optimism...Throughout this period, the local authority has provided support for the school. This has had a positive impact on helping the school to begin to make improvements needed.”

Inspections this academic year (Wilts):



Inspections September 23 – May 24 - Change from Previous Judgement							
Governance	Number			Percentage			No Previous Judgement
	Maintained	Improved	Declined	Maintained	Improved	Declined	
LA Maintained	20	3	1	83%	13%	4%	0
Multi-Academy Trust	6	4	1	55%	36%	9%	8
Single-Academy Trust	2	0	0	100%	0%	0%	0
Total	28	7	2	76%	19%	5%	8

This data includes inspections published up to 24/05/2024. Sourced from Nexus and GIAS.

Please note that this data cannot be updated for June due to Ofsted data being held for pre-election silence.

Inspections since September (Wilts):

Inspections September 23 – June 24: All Schools			
Grade	Number of Schools	Percentage	Comments
Outstanding	3	5%	
Good	45	82%	
Requires Improvement	7	13%	
Inadequate	0	0%	
Total	55		

This data includes inspections published up to 04/07/2024. Sourced from Nexus.

All inspection outcomes:

Area	Number of Schools				Percentage of Schools			
	Outstanding	Good	Requires Improvement	Inadequate	Outstanding	Good	Requires Improvement	Inadequate
England	3,132	16,565	1,738	404	14%	76%	8%	2%
South West	226	1,833	239	57	10%	78%	10%	2%
Wiltshire	19	176	34	4	8%	76%	15%	2%

This data includes inspections published to 30/04/2024. Sourced from Ofsted management information.

Please note that this data cannot be updated for June due to Ofsted data being held for pre-election silence.

Broken down into maintained and academy schools:

Maintained Schools Inspections September 23- June 24			
Grade	Number of Schools	Percentage	Comments
Outstanding	1	4%	
Good	22	81%	
Requires Improvement	4	15%	
Inadequate	0	0%	
Total	27		

This data includes inspections published up to 04/07/2024. Sourced from Nexus.

Academy Inspections September 23 - June 24			
Grade	Number of Schools	Percentage	Comments
Outstanding	2	7%	
Good	23	82%	
Requires Improvement	3	11%	
Inadequate	0	0%	
Total	28		

This data includes inspections published up to 04/07/2024. Sourced from Nexus.

Schools inspected and awaiting published reports	Type
OFFICIAL: Ofsted graded inspection of Lea and Garsdon CofE Primary School 12-13 June 2024	Maintained
OFFICIAL: Ofsted graded inspection of Preshute CofE Primary School 18-19 June 2024	Maintained
OFFICIAL: Ofsted graded inspection of Corsham Primary School (academy) 18-19 June 2024	Academy
OFFICIAL: Ofsted graded inspection of Malmesbury CofE Primary School (academy) 21-22 May 2024	Academy
OFFICIAL: Ofsted MONITORING inspection - Pewsey Vale School (secondary academy) 26 June 2024	Academy
OFFICIAL: Ofsted graded inspection of Priestley Primary School 03-04 July 2024	Maintained
OFFICIAL: Durrington All Saints CofE VC Infants school	Academy
OFFICIAL : Ofsted report - Frogwell Primary School 11-12 June 2024	Maintained

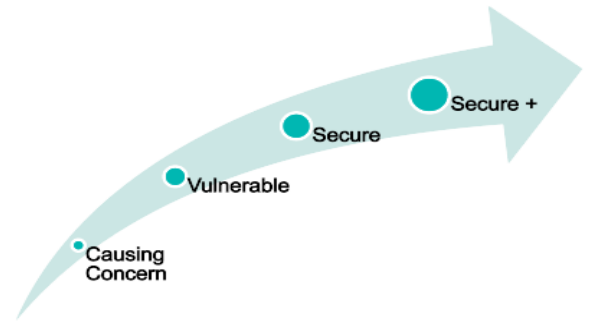
School Improvement Framework 2023-2026

Quality of offer and support

Causing Concern
Vulnerable
Secure
Secure +

Universal Offer – initial assessment – quality assurance
Secure and Secure+ schools will be supported in line with core offer

Vulnerable & CC Schools – targeted support from School Improvement Team, concise plan focused on rapid improvement with measurable outcomes.
Collaborative approach.



Vulnerable examples – Requires Improvement or a declining grade, may have a deficit budget, new or interim HT, limited capacity to support improvements.



Author:

Amanda Butler – Head of School Effectiveness
Contact details: Amanda.butler@wiltshire.gov.uk

This page is intentionally left blank

DfE updates and changes – June to July

Education staff wellbeing charter – Guidance

1. An explanation of the education staff wellbeing charter and the benefits of using it. Updated the list of resources to help support staff wellbeing and mental health [Education staff wellbeing charter - GOV.UK \(www.gov.uk\)](#) update 08/05/24

2. Wiltshire's position:

The charter has been highlighted and discussed at Senior Mental Health Leads training and network meetings as well during governor training sessions on staff wellbeing, during the past 2 years.

Transforming children and young people's mental health provision – Transparency Data

3. A summary of the delivery of commitments in the transforming children and young people's mental health provision green paper [Transforming children and young people's mental health provision - GOV.UK \(www.gov.uk\)](#) Update 12/05/24

4. Wiltshire's position: Wiltshire Council's Families and Childrens commissioning team are working closely with The Mental Health Support Team (MHST), commissioned by BSW ICB and provided by Oxford Health, to improve a system level response to supporting children's and young people's mental health. We have created links between the MHSTs, and Wiltshire Council SEND and Inclusion, School Effectiveness and Targeted Education to support the improved sharing of information and data to support increased referrals into the MHSTs and to increase awareness of the mental health support on offer. The Clinical Team Leader of Wiltshire Mental Health Support Team, recently attended the System of Excellence steering group to explain and share the current offer of support and future plans. This includes "Wave 12 funding" which will extend the offer of MHST to 39 additional schools, increasing the coverage of education settings from 26% to 40% and increasing the reach to pupils from 40% to over 60%. This funding, mobilisation and implementation will mean the offer is available in these new schools by January 2025. Additionally, the MHSTs will be increasing their SEND offer with the introduction of an additional SEND Emotional Mental Health Practitioner who will be working across 4 schools in BANES and Wiltshire.

The power of music to change lives: a national plan for music education – Policy paper

5. Sets out our vision for music education and how this can be achieved through partnerships with schools, music hubs, the music and creative sector, and others [The power of music to change lives: a national plan for music education - GOV.UK \(www.gov.uk\)](#) updated 15/05/24

6. Wiltshire's position: This policy is designed to engage schools to work with music hubs by way of introducing the national plan as part of the arts agenda on the curriculum. The emphasis is for schools to work with their music leads and create a plan that increases the offer to their pupils. This should increase inclusion for all abilities and households that face financial hardship. Wiltshire Music Connect has been outstanding at connecting with schools in Wiltshire and are

already working with 98% of the schools in Wiltshire which is considered exemplar. Wiltshire Music Connect are using the national plan focus to broaden the music offering in each school by encouraging music leads to work with the music associates and offer more varieties of music education in school. This could mean a school currently with a choir, now might be working with their associate to create a band or promote first access music tuition with individuals or in groups. The key is to offer more diversity in the music offer and Wiltshire Music Connect with its Music Associates across the County, are in a really good position to increase their positive outcomes further.

Age limits introduced to protect children in RSHE – Press release

7. New age ratings to be introduced on Relationships, Sex and Health Education content in schools to ensure it is appropriately and sensitively taught [Age limits introduced to protect children in RSHE - GOV.UK \(www.gov.uk\)](#) Published 16/05/24
8. Wiltshire's position:

Wiltshire schools have been informed about the proposed changes to the RSHE guidance through newsletters, online articles and network meetings this term. Schools have been encouraged to take part in the consultation and reminded that as the current statutory RSHE guidance from 2019 still applies, no changes to practice should be made until a final version of the guidance is published by the new government.

Promoting and supporting mental health and wellbeing in schools and colleges - Guidance

9. Find out what help you can get to develop a whole school or college approach to mental health and wellbeing [Promoting and supporting mental health and wellbeing in schools and colleges - GOV.UK \(www.gov.uk\)](#) updated 16/05/24
10. Wiltshire's position:

Senior Mental Health Lead Training

Senior Mental Health Lead training has been delivered by Wiltshire Council, on behalf of the DfE, to 134 Wiltshire schools & colleges. 220 Wiltshire schools and colleges have so far attended SMHL training from a range of providers (2021-2024). The DfE have recorded 206 Wiltshire settings that have claimed the grant of £1,200. SMHL grant take up: National 70%, South West 76%, Wiltshire 85% (May 2024).

Schools in Wiltshire, Swindon and B&NES are further supported by an ongoing series of local network meetings for Senior Mental Health Leads.

Wiltshire Healthy Schools Programme

Our local programme provides a framework for schools to implement a whole school approach to health and wellbeing, including a focus on emotional wellbeing and mental health. 132 schools are currently part of the Wiltshire Healthy Schools Programme, with 81 schools currently holding Wiltshire Healthy Schools accreditation (July 2024).

To support a whole school approach to mental health and wellbeing the Council also provides a programme of Youth Mental Health First Aid training, subsidised by the ICB.

Sustainability leadership and climate action plans in education – Guidance

11. The Department for Education's (DfE) sustainability leadership and climate action plans initiative. Updated with support resources now available to nurseries, schools and colleges [Sustainability leadership and climate action plans in education - GOV.UK \(www.gov.uk\)](https://www.gov.uk/guidance/sustainability-leadership-and-climate-action-plans-in-education) updated 20/05/24
12. Wiltshire's position: This non-statutory guidance was first made available to schools in May 2023. It has now been supplemented to include a digital hub of resources, services and tools to help schools identify appropriate action to develop, or build on, their climate action plans.

Period products in school and colleges – Guidance

13. Guidance for schools and post-16 education organisations in England on providing free period products for pupils and students. Updated to reflect that, in April 2024, the scheme was extended and will continue to operate for the 2024 to 2025 academic year [Period products in schools and colleges - GOV.UK \(www.gov.uk\)](https://www.gov.uk/guidance/period-products-in-schools-and-colleges) updated 30/05/24
14. Wiltshire's position:

This offer of support has been highlighted to Wiltshire schools. Promoting period and personal hygiene products in schools is a current priority for Wiltshire Youth Councillors. Youth Councillors want to note that this has been discussed at recent meetings and on secondary school Healthy Schools visits attended by Youth Councillors.

This page is intentionally left blank

TITLE:	Working Together to Improve School Attendance
FOR CONSIDERATION BY:	Children’s Select Committee
REPORT DATED:	10 July 2024
DIRECTOR:	Kathryn Davis Education and Skills
REPORT AUTHORS:	<p>Louise Lewis Head of Service, Targeted Education</p> <p>Karen Green Team Manager, Education Welfare</p> <p>Teresa McIlroy Strategic Lead for Alternative Provision Targeted Education</p>

1. Purpose of Report

- 1.1 To provide a regular update on the Council’s implementation of the February 2024 DfE guidance ‘Working Together to Improve School Attendance’.
- 1.2 The 2024 DfE guidance has statutory status with effect from 19th August 2024 and until that point the LA must continue to work to the previously published [2022 Working Together to Improve School Attendance](#) non-statutory guidance.
- 1.3 In addition to the [Working Together to Improve School Attendance](#) statutory guidance the government has introduced the following regulations which also become effective 19th August 2024 and which support the statutory guidance.
 - The [Education \(Information About Individual Pupils\) \(England\) \(Amendment\) Regulations 2024](#). These regulations mandate the sharing of attendance data with the DfE
 - The [School Attendance \(Pupil Registration\) \(England\) Regulations 2024](#). These regulations govern all aspects of attendance and admission registers. This includes changes to deletions from school roll and the introduction of new attendance and absence codes to support better understanding and analysis of reasons for absence from school
 - The [Education \(Penalty Notices\) \(England\) \(Amendment\) Regulations 2024](#). These regulations introduce a standard national approach to how local authorities and schools can issue penalty notices related to absence from school.

2. Implementation planning for the introduction of statutory guidance and new Regulations

2.1 We welcomed a visit with Sara Griffiths MBE, DfE Attendance Advisor on 04/07/2024. This was to discuss our progress towards implementing the new statutory guidance and review the Wiltshire attendance self-assessment document. She confirmed that we are firmly on track to implement the statutory guidance and recommended that a number of areas of our self-assessment should be upgraded to reflect this. She was particularly impressed with the work taking place directly with schools to support their implementation and the work with other services to support them with prioritising attendance for learners.

2.2 As part of a range of supportive measures for schools as they implement the statutory guidance, we have created a funded four session course, 'Improving School Attendance Programme' drawing on expertise from across LA service areas and beyond. The programme is designed to support school leaders to plan and develop equitable and effective school attendance strategies which will deliver and sustain change [Improving School Attendance Programme \(ISAP\) | Right Choice \(wiltshire.gov.uk\)](https://www.wiltshire.gov.uk/improving-school-attendance-programme-isap-right-choice).

99 schools have taken part, 74 primary schools and 25 secondary; a mix of academies and maintained from across the county. Feedback shows high impact for schools to engage and network, particularly understanding the importance of attendance in recognising the issues for vulnerable pupils and the importance of taking a tiered approach to improving attendance.

An information briefing for Governors of schools on the programme has also been delivered, with 69 Governors signed up.

2.3 A series of Attendance briefings have also been delivered to support schools with their understanding and implementation of the statutory guidance. We have delivered:

- 4 briefings with 87 schools in attendance.
- 2 sessions at the School Business Manager Forum – attendance will be a standing item into next academic year.
- 2 sessions at the termly Headteacher's briefing.

2.4 To support school leaders understand their school's attendance, including that of vulnerable groups in comparison to all Wiltshire schools, we have begun to publish monthly attendance headlines on the school's newsletter. This is alongside the more detailed School Profiles which contain school level absence trends and comparators to national and Wiltshire data. These are updated 3 times a year.

3. Attendance Data

3.1 Breakdown of the attendance data from Wiltshire schools. This is the latest published data by the DfE (June 2024) Time period: 2023/24 Spring term between 2 January and 31 March 2024

Source: Explore Education Statistics > Pupil absence in schools in England > spring 2024 data:

* Arrows to show change in Wiltshire data from previous report. Green showing improvement, amber decrease within 2%, red decrease of more than 2%.

* highlighting as a comparator to national

		Wiltshire	South West	England
Total	Number of pupil enrolments	53,077	601,173	6,173,296
	Overall absence rate	8.3% ↑	8.0%	7.3%
	Authorised absence rate	5.9% ↑	5.7%	4.9%
	Unauthorised absence rate	2.4% ↑	2.2%	2.3%
Special	Number of pupil enrolments	917	12412	148,585
	Overall absence rate	12.6% ↓	13.8%	13.2%
	Authorised absence rate	10.0% ↓	10.4%	10.0%
	Unauthorised absence rate	2.5% ↓	3.3%	3.1%
	Percentage of persistent absentees (10% or more missed)	34.8% ↓	38.1%	36.8%
State-funded primary	Number of pupil enrolments	36,659	398,606	4,484,966
	Overall absence rate	5.3% ↔	5.8%	5.6%
	Authorised absence rate	4.4% ↔	4.6%	4.2%
	Unauthorised absence rate	0.8% ↓	1.1%	1.4%
	Percentage of persistent absentees (10% or more missed)	16.2% ↑	18.3%	17.8%
State-funded secondary	Number of pupil enrolments	31,364	333,618	3,530,151
	Overall absence rate	9.4% ↑	10.4%	9.1%
	Authorised absence rate	6.3% ↑	6.9%	5.6%
	Unauthorised absence rate	3.1% ↑	3.4%	3.5%
	Percentage of persistent absentees (10% or more missed)	26.4% ↑	29.3%	26.2%

Source: Explore Education Statistics > Pupil absence in schools in England > Absence rates by pupil characteristic - full academic years:

* Arrows to show change in Wiltshire data from previous report. Green showing improvement, amber decrease within 2%, red decrease of more than 2%.

* highlighting as a comparator to national

		Wiltshire	South West	England
FSM (Free School Meals) eligible	Overall absence rate	13.2% ↑	13.2%	11.3%
	Authorised absence rate	8.8% ↑	8.1%	6.4%
	Unauthorised absence rate	4.4% ↔	5.1%	4.9%
	Percentage of persistent absentees (10% or more missed)	38.5% ↑	39.7%	34.6%
SEN - EHC plans	Overall absence rate	13.8% ↑	15.8%	13.5%
	Authorised absence rate	9.9% ↑	11%	9%

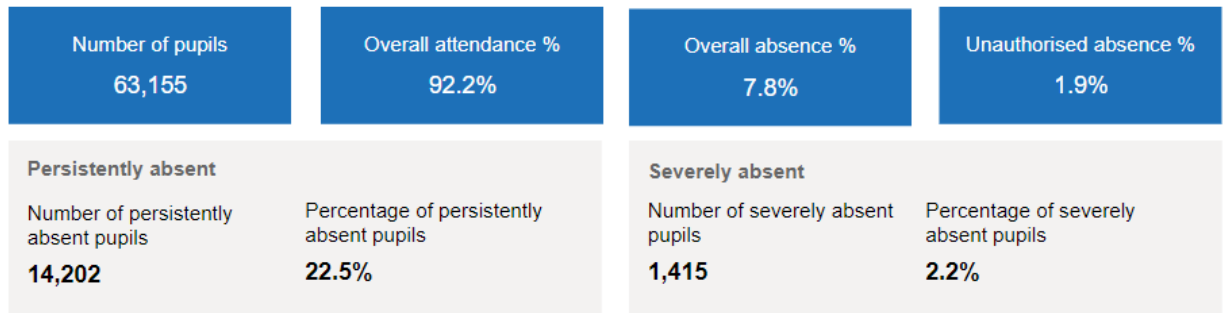
	Unauthorised absence rate	3.9%	↑	4.6%	4.5%
	Percentage of persistent absentees (10% or more missed)	31.2%	↓	40.2%	36.0%
SEN - SEN Support	Overall absence rate	10.5%	↑	12.5%	11.1%
	Authorised absence rate	7.1%	↑	8.4%	7%
	Unauthorised absence rate	3.3%	↑	4.1%	4.1%
	Percentage of persistent absentees (10% or more missed)	29.9%	↑	34.2%	31.8%

3.2 Live attendance data is available via the DfE WONDE portal. For the academic year 2023-24 this data is unverified but it provides useful statistical information related to attendance and absence trends nationally and regionally to enable the authority to make comparisons and initial judgements about attendance performance.

We now have 213 Wiltshire schools submitting data so are on course for a complete dataset by the autumn term.

3.3 Source: WONDE DfE

Current academic year up to Wednesday 03 July 2024



The data reflects better performance in Wiltshire than nationally.

92.2% of sessions were recorded as attending in Wiltshire (compared to 92% of sessions at national level).

7.8% of sessions were recorded as absence in Wiltshire (compared to 7% of sessions at national level).

22.5% of pupils were recorded as persistently absent in Wiltshire (compared to 20% of pupils at national level)

PUPILS WITH AN EHCP

Current academic year up to Wednesday 03 July 2024

Number of pupils 3,641		Overall attendance % 86.0%		Overall absence % 14.0%		Unauthorised absence % 3.8%	
Persistently absent				Severely absent			
Number of persistently absent pupils 1,371		Percentage of persistently absent pupils 37.7%		Number of severely absent pupils 309		Percentage of severely absent pupils 8.5%	

PUPILS WITH SEN SUPPORT INDICATOR

Current academic year up to Wednesday 03 July 2024

Number of pupils 9,492		Overall attendance % 89.9%		Overall absence % 10.1%		Unauthorised absence % 3.0%	
Persistently absent				Severely absent			
Number of persistently absent pupils 2,766		Percentage of persistently absent pupils 29.1%		Number of severely absent pupils 390		Percentage of severely absent pupils 4.1%	

PUPILS WITH FSM INDICATOR

Current academic year up to Wednesday 03 July 2024

Number of pupils 11,274		Overall attendance % 87.6%		Overall absence % 12.4%		Unauthorised absence % 4.5%	
Persistently absent				Severely absent			
Number of persistently absent pupils 4,282		Percentage of persistently absent pupils 38.0%		Number of severely absent pupils 645		Percentage of severely absent pupils 5.7%	

4. Permanent exclusion and suspension from school

DfE published data – permanent exclusions. 2021/22	Rate		
	No SEN	SEN Support	EHCP
Wiltshire Total	0.00%	0.01%	0.03%
Primary	0.00%	0.02%	0.08%
Secondary	0.00%	0.00%	0.00%
Special	0.00%	0.00%	0.00%
National Total	0.05%	0.25%	0.13%
Primary	0.00%	0.08%	0.13%
Secondary	0.11%	0.50%	0.27%
Special	0.00%	0.00%	0.05%
South-West Total	0.05%	0.32%	0.21%
Primary	0.00%	0.11%	0.22%
Secondary	0.10%	0.59%	0.35%
Special	0.00%	0.00%	0.10%

4.1 Despite an increase in permanent exclusion this academic year in Wiltshire, the rate of permanent exclusion is consistently significantly lower than the national rate and compared to schools in the south-west.

The majority of secondary schools receive devolved funding through a Service Level Agreement (SLA) to prevent the need for permanent exclusion. For primary schools, the behaviour support team supports schools to build their capacity and to implement individual plans of support including alternative provision where appropriate.

This academic year there have been 26 secondary aged pupils (one of whom has an EHCP) who were permanently excluded. 19 of these permanent exclusions relate to pupils from two schools within one multi academy trust that withdrew from the SLA in relation to the devolved inclusion funding.

Four primary aged pupils were permanently excluded, including one pupil with an EHCP.

4.2 Suspension rates

2022/23 full year comparative data will be published by DfE in July 2024

DfE latest published suspension data 2021/22	Rate		
	No SEN	SEN Support	EHCP
Wiltshire Total	4.0%	16.7%	28.7%
Primary	0.34%	8.6%	20.4%
Secondary	8.5%	29.2%	54.3%
Special	X	X	15.8%
National Total	4.7%	18.6%	17.6%
Primary	0.35%	6.3%	13.8%

Secondary	10.3%	36.2%	38.0%
Special	X	X	9.6%
South-West Total	4.9%	23.0%	26.0%
Primary	0.33%	7.7%	19.5%
Secondary	10.6%	43.1%	54.0%
Special	9.1%	3.1%	11.8%

4.3 The rate of suspension in Wiltshire of pupils with no identified were lower than the national rate and the rate for schools in the south-west. Rates of suspension for pupils with SEN Support and with an EHCP were higher than these comparators.

The reasons for these higher rates are hard to identify for certain but are likely to relate to the significantly lower rates of permanent exclusion in all phases and higher rates of pupils with identified SEN Support and with an EHCP compared to national rate and the rate for schools in the south-west. Data collated locally indicates a reduction in the suspension rate in Wiltshire in 2022/23 and in 2023/24 of pupils with an EHCP.

To further support schools to reduce the need for suspension and permanent exclusion, a new behaviour support offer will be in place for secondary schools in the autumn term and the primary behaviour support team will continue to prioritise advice support and challenge to schools around suspension of pupils with SEN Support or an EHCP.

5. Recommendation

5.1 For the committee to note this update.

This page is intentionally left blank

Wiltshire Council

Children's Select Committee

18 July 2024

Schools Forum update

Key discussion points/issues from meeting of Schools Forum – 27 June 2024.

- Updates from the joint meeting of the School Funding Working Group and SEN Working Group and from the Early Years Reference Group
- Dedicated Schools Budget update as at 31 March 2024
- SEND Transformation Update
- Annual Schools Consultation – Transfer of funding from Schools Block to High Needs Block 2025-26
- Allocation of Funding Growth in Specialist Places
- Review of EHCP Top Up Funding – Key Principles
- Annual Schools Consultation
- Early Years and Wraparound Childcare Update

The next meeting of Schools Forum will be held on 10 October 2024 and Children's Select will receive an update at their meeting on 26 November 2024.

Agendas and minutes for Schools Forum can be accessed on: [Browse meetings - Schools Forum | Wiltshire Council](#)

This page is intentionally left blank

Wiltshire Council

Children's Select Committee

18 July 2024

Corporate Parenting Panel update

Key discussion points/issues from meeting of Corporate Parenting Panel – 25 June 2024.

- Annual Report of the Voice and Participation Team 2023/24
The Panel were reminded that the team is responsible for providing independent voice to our young people and families and alongside employed advocates and voice workers the Service supports volunteers, ambassadors and sessional workers. The Panel were shown an updated team structure, details of the service delivery and impact, what the service were proud of and the areas of focus moving forward.
- Strategic Priority Highlight – “For my voice to be heard and for it to matter and influence decision making and drive change”
Cllr Sam Pearce-Kearney ‘interviewed’ the Voice Ambassadors present at the meeting and asked them about their achievements over the last 3 months, how did they feel that they are using the power of their voice and what were they enjoying about their ambassador roles?
- Annual Update on the Connect (substance misuse) service
The Panel were given referral comparison data of those using the Connect service including their age, gender, referring agency and substance use of those referred, details of the work done over the last year and next steps planned. The Panel also heard a clip of an interview with a young person who had benefited from using the Connect service.
- Update on the Staying Close Project
The Panel received highlights from year one of the project and the priorities for year two and specifically heard from a young person who was part of the project to detail what support he and received and heard a shared story from another young person that was read out at the meeting.
- CAMHS update report
The Panel received details of the open caseload as at May 2024, the current service offer in Wiltshire, the ages of the young people CAMHS are working with, information about waiting times, current challenges and the actions underway, staff vacancy rates, and details of the Link Worker role.
- Findings from Initial Health Assessments Audit carried out in April 2024
The Panel were given details of why the re-audit of the quality of IHA’s was repeated from 2023, what the results showed and the recommendations moving forward.
- Update on progress from the Child Sexual Abuse Task and Finish Group
The Panel received details of the summary of the final report of the Task and Finish Group that was due to go to the Families and Children’s Systems Assurance group in July 2024 including the recommendations.

- Review of the Panel's annual report to Council 2023/24
The Panel received an overview of the revised executive summary of the annual report and noted that a young person version of the report would also be prepared to be presented to Full Council in July 2024 and that some further revisions would be made to the report following suggestions from the scrutiny received from the Childrens Select Standing Task Group.
- Corporate Parenting data and exceptions report for Quarter 4 (January to March 2024)
The Panel received details of the greens to celebrate and reds of concern in the most recent data collection.
- Data Spotlight – Six monthly update on Missing Data for Children
The Panel received an overview of the Children Looked After missing episodes from October 2023 to March 2024, information about the return home interviews, push and pull factors and that a SWAP audit would be carried out in the near future to provide assurance that data sharing for Missing Children is efficient and effective.
- Placement Sufficiency Update
The Panel received an update on the residential children's home project, the supported accommodation project, the Mockingbird support network for foster carers and the go live of the Regional Recruitment and Retention Hub in May 2024.
- Update on progressing care experience as a protected characteristic
The Panel were informed that an initial review of the options available based on national information and review of other local authority decisions has been undertaken and that further work would take place over the summer to consult with children in care and care experienced adults and reach out to partners to establish their position in relation to care experienced as a protected characteristic.
- Updates from other Council Teams and other Representatives
The Panel received details of intensive swimming lessons that had been arranged for the summer holidays for children aged 4-16 that were unable to access lessons with a particular focus on older children who had not had this opportunity.

The next meeting of the Panel will be on 24 September 2024 and Children's Select will receive an update at their meeting on 26 November 2024.

Wiltshire Council

Children's Select Committee

18th July 2024

Safety Valve Update

Background

1. The Dedicated Schools Grant (DSG) is funding which local authorities in England receive to support schools. The DSG is split into four blocks which support different parts of the schools system.
2. One of these blocks is the High Needs Block which is used to support children and young people with Special Educational Needs and Disabilities (SEND). Since 2018/19 the High Needs Block has been under increasing pressure. This growth in expenditure has been seen in every council in England, and Wiltshire is no exception.
3. In Wiltshire from 2018/19 to 2022/23, this equated to a 51% growth in the number of children supported by an EHCP, and a 46% growth in the amount of money being spent from the High Needs Block. Over the same period, the money received into the High Needs Block from government only grew by 36%.
4. While High Needs Block income has not kept pace with the growth in demand, there are also changes that councils can make to respond to the changing strategic context.
5. The government introduced a statutory override which allows councils to hold their DSG deficit as a negative reserve on their balance sheet, separate from the rest of the council's finances. This statutory override, however, is due to expire 31st March 2026 and at that point the cumulative unmitigated deficit could be £117.0m while the current forecast total general fund and earmarked reserves are £90m.
6. Safety Valve is a DfE programme to support councils that have a financial challenge with their High Needs Block. The invitation to join Safety Valve was received in August 2023.
7. The High Needs Block Sustainability Plan for Wiltshire has been developed with stakeholders to identify improvements in our SEND system that will create better support for children and young people and their families, while addressing the financial challenges.
8. That plan was submitted to DfE in January with endorsement from Children's Select Committee, Wiltshire Schools Forum, and a cross-sector board including membership from Wiltshire Parent Carers Council (WPCC) and the Integrated Care Board (ICB). This was then turned into an agreement which was signed in March 2024.
9. At the end of the plan period, the cumulative mitigated deficit is forecast to be £137.2m. The agreement commits the DfE to contribute £67m of additional DSG towards this figure, while £70.3m will need to be found from other funding sources to completely remove the deficit.

10. If the council successfully meets the deal criteria faster than expected, then this figure could reduce however, if the council fails to meet the deal criteria then this figure will go up, and could lead to the DfE withholding future Safety Valve funding.
11. The plan that the council submitted sets out how the savings can be met through a series of “invest to save” projects that will improve support for children and young people with SEND, and their families.

July update

12. Following feedback at the last Children’s Select Committee, the programme team is currently in the process of rebuilding all the reporting templates and dashboards to ensure that the ‘programme activity’ is reported alongside the ‘outcome measures’ so that it is easier to see the impact of the work, and parse whether additional effort is required in a particular area.
13. This dashboard, Appendix 1, is still a work in progress, but hopefully Children’s Select Committee will appreciate the work that has gone into producing a product that gives elected members the visibility of this important programme.
14. Overall, the programme has been RAG rated Amber/Green. This is because, while the project activity is proceeding as planned, the data indicators are not moving yet. Indeed, it would appear that demand for ECHPs is just as strong as last year, and so the system has over 200 more plans than were forecast for this point in the plan.
15. Financial indicators are currently RAG rated Green because the latest reported forecast has all financial indicators on track. However, it should be noted that the financial indicators lag behind the SEND data, and so this may change as the data catches up.
16. Efforts remain focussed on developing the support offer for Schools in the new academic year and reviewing internal decision-making processes. These areas are most likely to deliver meaningful impact in the short to medium term.
17. The 6 priority programme areas remain the same and are closely aligned to the emerging SEND and AP Strategy, due to be launched in September.
 - Voice of the child and their family
 - Improving support, skills and practice
 - Right support at the right time
 - Preparation for adulthood
 - Financial assurance in our SEND system
 - Improving communication, processes and culture
18. Three programme areas within SEND Transformation are RAG rated amber:
 - Improving support, skills and practice – amber due to the adverse movement of the EHCP numbers indicating that more is required to support children without a plan.
 - Right support at the right time – amber due to concerns about the delivery of new special school places, especially as related to the Safety Valve capital request.

- Preparation for adulthood – amber due to delivery plans still being in draft, however there has been positive progress on this and it is expected to be green in September.

19. As was reported in June, the council is still waiting to hear about the capital request of £5.7m that was submitted to bring forward the provision of special school places in the south of the county. The DfE requested more information about the bid in May, which was supplied. However, given this is a ministerial decision, the current expectation is that the authority is unlikely to hear back until after the UK General Election on 4th July, and probably not until September 2024 at the earliest.

20. Clearly, this delay places the opening of expanded special school provision in Salisbury at risk in the planned timeframe. Work is underway to understand what the impact might be of a delay, and whether there are other projects in the capital portfolio which could be delayed to accommodate this project.

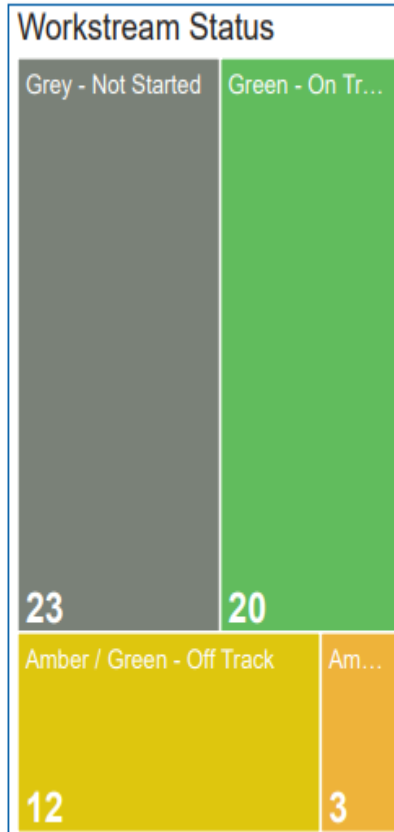
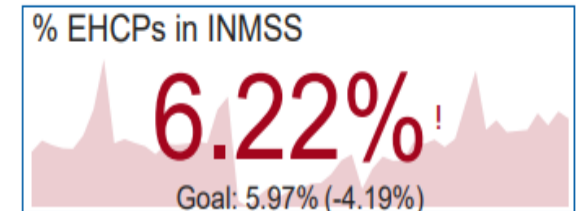
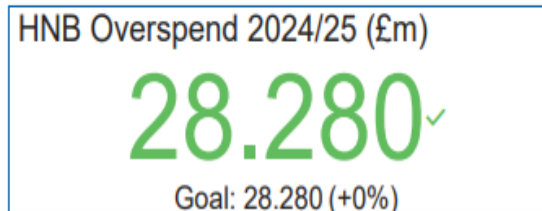
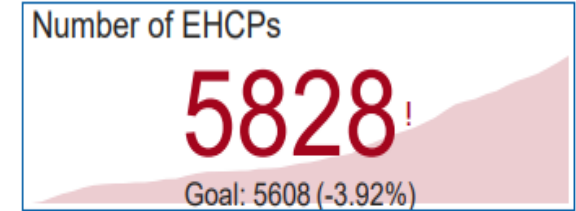
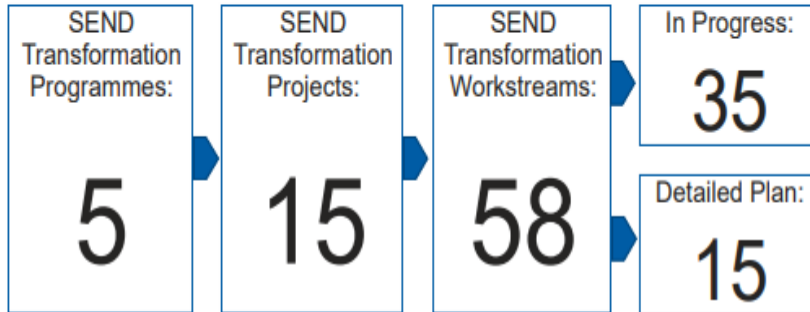
Appendices:

1. Childrens Select Committee Transformation Dashboard

This page is intentionally left blank



Portfolio Summary



Workstreams Off Track

Project	Workstream	RAG	Service Lead	Project Lead
Give young people and parents confidence in the employability and education offer	Increase PfA capacity to allow more informed and proactive conversations about ceasing plans.	Amber / Green - Off Track	Lisa Fryer	Ben Stevens
Improve inclusion practice through training and support	Increased Behavioural Support offer available to schools	Grey - Not Started	Teresa McIlroy / James Wood	Ben Stevens
Improve inclusion practice through training and support	Resource Library to allows schools and early years to borrow inclusive resources	Amber / Green - Off Track	Paul Redford / Emma Cooke	Ben Stevens
Improve inclusion practice through training and support	Wiltshire SEND Inclusion Charter	Amber / Green - Off Track	Lisa Fryer / Vikki Vince	Grace Davies
Integrated system of early support and intervention	A trauma informed early-intervention model for children with mental health or emotional wellbeing concerns	Amber / Red - At Risk	Kai Muxlow / Tiff Ferris	Ben Stevens
More effective processes and an improved experience of the process	Increase capacity in pressured areas of Statutory SEND service	Amber / Green - Off Track	Lisa Fryer	Ben Stevens
Proactive support at School Transition points	A model of short-term transition funding	Grey - Not Started	Lisa Fryer	Ben Stevens
Proactive support at School Transition points	Improved transition planning for children with SEN	Grey - Not Started	Caroline Bell / Helen Ortnor / EP Rep	Ben Stevens
Young people who are ready to embrace adulthood	Better link-up between health, social care and education	Grey - Not Started	Lisa Fryer / Hazel Malcolm / Caroline Rowen	Ben Stevens

Key Risks (12+ Risk Score)

Risks have not moved since last month.

At a programme level, the key risks remain that our interventions are not sufficient to meet the challenge, and that capital is not provided. Work is continuing against both risks to reduce both the impact and the likelihood.

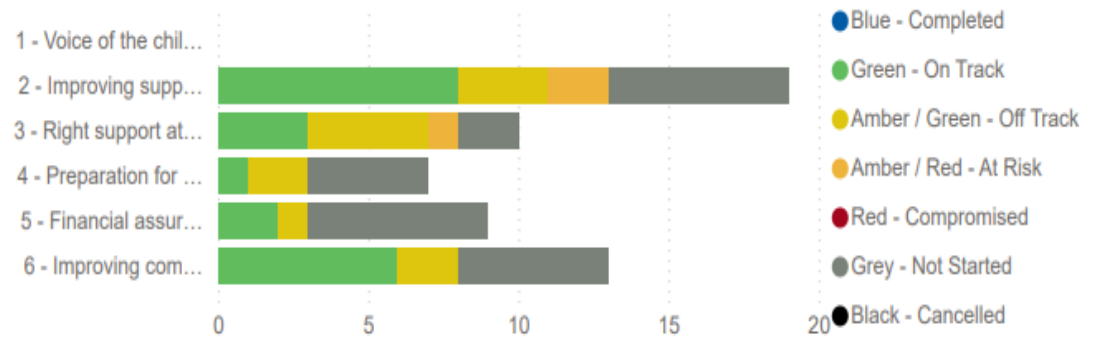
Programme level risks

ID	Risk	Impact	Risk Owner	Impact (1-5)	Likelihood (1-5)	Risk Score	Action required
R-002	If the mitigations fail to have an impact, or if growth is stronger than forecast, we will not meet our trajectory.	The Council will face further financial difficulty and the DfE may withhold payments under the Safety Valve agreement	Kathryn Davis	5	4	20	Further work is underway to ensure this risk is understood corporately, including in our comms plan
R-003	We may not be able to access the capital investment required to deliver the mitigations in our plan	The Services could be impacted and fail to deliver the outcomes required for our learners	Liz Williams	5	3	15	We are engaging fully with Safety Valve and are discussing the opportunity to take on a negotiator to act on our behalf. We should also try to make

Transformation Programme Overview

Narrative

Workstream Status by Programme



Page 97

1 - Voice of the child and their family		Milestones delivered on time 0% (Blank) 100%				
2 - Improving support, skills and practice		Milestones delivered on time 0% 80% 90% 100%	24/25 savings forecast (£m) -0.753 -0.376 -0.376	EHCNA 12 month rolling average 99	Share of new EHCPs in Early Years 30.5%	
3 - Right support at the right time		Milestones delivered on time 0% (Blank) 90% 100%	24/25 savings forecast (£m) 0.000 0.000 0.000	Special School places commissioned 950	CYP with EHCP in AP for >1 term 173	
4 - Preparation for adulthood		Milestones delivered on time 0% 83% 90% 100%	24/25 savings forecast (£m) 0.000 0.582 0.582	Post 16 cease 12 month rolling ave 11	% Post-16 ceases which are non-NEET 28.6%	
5 - Financial assurance in our SEND system		Milestones delivered on time 0% 50% 90% 100%	24/25 savings forecast (£m) 0.000 0.000 0.000	Current average cost per EHCP (£) 17.1K	Ad hoc funding decisions this month (Blank)	
6 - Improving communication, processes and culture		Milestones delivered on time 0% 83% 90% 100%	24/25 savings forecast (£m) -0.753 -0.376 -0.376	EHCNA requests from parent carers 33.7%	EHCP issued within 20 week target 20.4%	

This page is intentionally left blank

Children's Select Committee (CSC) – Forward work programme Agenda items for the committee

Standing items (at all meetings)

Title - Details / purpose	Type	Report author / lead
Safety Valve update – summary of recent developments, successes and issues	Written	Ben Stevens
Update from Wiltshire Youth Voice - summary of recent activities	Written	Joe Sutton/Gary Norton-Sanders
School Ofsted Judgements - effectiveness of schools as seen by Ofsted Inspection.	Written	Amanda Butler
DfE Changes - Update from Department for Education	Written	David Harris
Working together to improve school attendance - latest requirements of the non-statutory guidance the DfE published in May 2022 to apply from September 2022.	Written	Louise Lewis
Schools Forum's update - very brief update on key items from the last meeting of Schools Forum	Written	Lisa Pullin
Corporate Parenting Panel update - brief update highlighting key items from the last meeting of the Corporate Parenting Panel	Written	Lisa Pullin
Directors' update Cabinet Member and Portfolio Holders' update Chair's update	Verbal	All directors Cabinet Members and Portfolio holders Chair

Verbal updates highlighting any key issues (current or emerging), successes or milestones in their respective areas since the last meeting of the committee, which may not require a full agenda item and are not covered elsewhere on this agenda.		
---	--	--

Thursday 5 September, 10.30am			
<i>Pre-meeting briefing topic:</i>			
	Title Details / purpose and Timeframe (if applicable)	Origins / history	Report author / lead officer
Substantive	Families and Children’s Services Roadmap 2024-2026 (outcome from National Independent Review of Children's Social Care update - Children’s Social Care: Stable Homes Built on Love consultation.) <i>To receive an update in Summer 2024 to include learning from pilot projects and other local authorities.</i>	CSC October 23	Jen Salter Tim Sandle
Substantive	Youth provision and area board youth funding task group executive response To review draft amendments to the area board funding criteria before it is published.Area Board.	CSC Jan 2024	Rhys Schell
Informative	Adoption Annual Report	Annual Report	
Informative	Early Years, childcare and entitlement strategy An update on expected changes	OS/Executive meeting 14 May 2024	Sally-Ann Bryant?

Tuesday 26 November, 10.30am <i>Pre-meeting briefing topic: Affordable school strategy – Kathryn Davis</i>			
	Title Details / purpose and Timeframe (if applicable)	Origins / history	Report author / lead officer
Substantive	SEND Strategy and SEND improvement plan / board (NB linked to Alternative Provision) An update on the new SEND Strategy (to have been considered by Standing Task Group)	OS/Executive meeting 14 May 2024	Kathryn Davis Melissa Hardwell? Lisa Fryer?
Substantive	Alternative Provision (NB linked to SEND items) Current Alternative Provision available, known issues or gaps and development plans.	OS/Executive meeting 14 May 2024	Kathryn Davis
Substantive	Reducing inequalities in schools A wider determinants report to explore: <ul style="list-style-type: none"> • Child poverty / social mobility and correlation to school attendance and attainment • What schools can do to reduce inequalities (affordable school strategy – NB will also be pre-meeting briefing topic) 		Kathryn Davis
Substantive	Child Sufficiency Annual Report To include specific requests made at CSC, 6 June 2024 Agenda and draft minutes - Democratic Services - Wiltshire Council	CSC, 6 June 2024	
Informative	Wiltshire Learning Alliance (WLA) To receive feedback following a “relaunch” and advertising campaign in September for the WLA.	OS/Executive meeting 14 May 2024	Kathryn Davis

Tuesday 26 November, 10.30am			
<i>Pre-meeting briefing topic: Affordable school strategy – Kathryn Davis</i>			
	Title Details / purpose and Timeframe (if applicable)	Origins / history	Report author / lead officer

Wednesday 15 January 2025, 10.30am <i>Pre-meeting briefing topic:</i>			
	Title Details / purpose and Timeframe (if applicable)	Origins / history	Report author / lead officer
Substantive	Safety Valve – one year review Report to include: <ul style="list-style-type: none"> • Timeline and plan to enable future monitoring; • Financial impact; • Service impact (for “customers”). Aim – to determine if OS is required.	OS/Executive meeting 14 May 2024	Lucy Townsend
Substantive	Children and Young People Health Wellbeing Survey – “so what” / analysis report To consider actions taken from the responses to the survey	CSC 24 January 2024 OS/Executive meeting 14 May 2024	Kate Blackburn Sally Johnson
Substantive	Family Hub update – to include input from libraries & leisure (following briefing to chair and vice-chair) For a report to be presented to the full committee on 15 January 2025 detailing the mobilisation of the new contract, development of Family Hubs by Spurgeons and evaluation of performance, dependant on the updates received by the Standing Task Group.	CSC 24 January 2024	David Redfern Jen Salter
Informative			

Thursday 6 March 2025, 10.30am <i>Pre-meeting briefing topic:</i>			
	Title Details / purpose and Timeframe (if applicable)	Origins / history	Report author / lead officer
Substantive	<p>School improvement / performance</p> <p>Report from the school performance officer group to inform the committee of current performance and improvement over the last year and future plans to address known issues / concerns. This would also include up to date information on SLAs with schools.</p> <p>This would inform the committee's legacy report in terms of any further scrutiny required.</p>	OS/Executive meeting 14 May 2024	Kathryn Davis Louise Lewis
Substantive	<p>Family Hub – one year review</p> <p>To consider a report on the implementation of the Family Hub model, on the monitoring of performance and on plans for the year ahead.</p> <p>This would inform the committee's legacy report in terms of any further scrutiny required.</p>	OS/Executive meeting 14 May 2024	Jen Salter
Informative	<p>Ofsted inspection outcome - Business plan update</p> <p>To receive the updated Business Plan</p>	CSC 24 January 2024	
Informative			

Future items for consideration by the Children's Select Committee

Date to be set			
	Title Details / purpose and Timeframe (if applicable)	Origins / history	Report author / lead officer
Substantive	Plans for the future commissioning of children and young people's Mental Health services	Proposed by ICB	ICB (Jane Rowland / Fiona Slevin-Brown) / Lucy Townsend / Jen Salter
Informative	National Independent Review of Children's Social Care update To receive an update in Summer 2024 to include learning from pilot projects and other local authorities.	CSC 31 October 2024	Jen Salter Tim Sandle
Informative	Dads Matter Too A verbal update (as part of Directors Update) on the embedding of Dads Matter Too	CSC 24 January 2024	
Informative	Education Performance Outcomes To receive a further report on trend details	CSC 12 March 2024	

Page 105

Items considered in the last 12 months

Meeting date (link)	Title Outcome / actions	Origins / history	Report author / lead officer
14 March 2023	Independent Care Review of Children's Social Care and National Review into the murders of Arthur Labinjo-Hughes and Star Hobson	Requested by officers	Jen Salter Fiona Hayward

	“Shaping the future” programme with schools - update on the model chosen	CSC 8 June 2022 Schools Ofsted judgements	Andrew Best Helean Hughes
	Standing Advisory Council on Religious Education (SACRE)	Requested by officers	Andrew Best Helean Hughes
	Performance Outcomes Report Academic Year 2021-2022 - Pupil Performance in Public Tests and Examinations	Deferred from January meeting	Andrew Best Helean Hughes
6 June 2023	Family Hub Contract	Cabinet Item	Gary Binstead Jen Salter
	Business plan and action plan update	Regular item (6 monthly)	Directors
	Child Poverty	Current FWP	Lucy Townsend
12 July 2023	FACT – interim report data set and Family Help programme Safeguarding processes – outcome of the review by the Institute of Public Care Update on building developments at Silverwood Corporate Parenting Panel annual report Community Health Services Child, Youth and Family Voice Team annual report		
21 September 2023	Emotional Wellbeing and Mental Health Strategy		
	Outcome of the SEND LGA Peer Review		
	Children missing education / children missing out on education		
	Elective home education		
	Task Group Report - Youth Provision and Area Board Youth Funding		
	Outcome of the review of the “Dads matter too” multi agency project		
	Annual Adoption report		
31 October 2023	Young Carers in Wiltshire	<i>This was originally planned as a briefing</i>	Jen Salter + commissioning
	SEND schools provision / SEND place planning	Chair’s briefing on Silverwood 26/04/23	Melissa Hardwell Cate Mullen

		OS/Exec meeting January 2023 <i>Deferred from September meeting.</i>	
	Childcare Sufficiency	Yearly item	Lucy-Anne Bryant
	Local Government Association (LGA) peer review of Special Educational Needs and Disabilities (SEND) and Alternative Provision (AP)	CSC 25 October 2022	Simon Thomas
	Young Carers in Wiltshire	<i>Originally planned as a briefing - deferred from September meeting.</i>	Jen Salter + commissioning
	Independent Care Review of Children's Social Care and National Review into the murders of Arthur Labinjo-Hughes and Star Hobson	CSC 14 March 2023	Jen Salter
	Early Years Strategy	CSC 6 June 2023	Helean Hughes
7 December 2023	Extraordinary meeting – Safety Valve Management Plan		
16 January 2024	Family Hub	CSC 6 June 2023	Gary Binstead Jen Salter
	School Health and Wellbeing survey	CSC 6 July 2022 – deferred to include feedback from strategic colleagues	Sally Johnson
	Dads Matter too		
12 March 2024	FACT – one-year update		
	Business plan and action plan update (every 6 months)	CSC 20 September 2022 CSC 6 June 2023	Directors
	Outcome of the extensive review of the CAMHS contract	CSC 6 June 2023	Jen Salter

			+ commissioning

Children's Select Committee (CSC) – Forward work programme Task groups and rapid scrutiny exercises

Current / active task groups

Name (establishment date by CSC) Terms of reference / aims Meeting(s) update	Membership Vacancies Supporting officer	Start date Final report expected
<p>Children's Select Committee's Standing Task Group</p> <p>Detailed reviews of the regular reports that come within the Children's Select Committee's remit and to present any key issues, findings and recommendations to the Children's Select Committee, and / or other relevant committees, for discussion, endorsement or further scrutiny where appropriate.</p> <p>Meeting(s) update: n/a</p>	<p>Cllr Helen Belcher John Hawkins Cllr Jon Hubbard (Chair) Cllr Jacqui Lay Cllr Jo Trigg Cllr James Sheppard</p> <p>No vacancy</p> <p><i>Supporting officer</i> <i>Marie Gondlach</i></p>	<p>n/a - Standing task group</p>
<p>Adoption West Joint Scrutiny Panel</p> <p>The panel acts as a critical friend, providing independent scrutiny of the work of Adoption West (AW). It is an essential element of assuring democratic accountability for the use of public funds.</p> <p>Meeting(s) update: n/a</p>	<p>Cllr Jon Hubbard (Chair) Cllr Carole King</p> <p>No vacancy</p> <p><i>Supporting officer:</i> <i>Marie Gondlach</i></p>	<p>n/a - Standing Panel</p>

Children's Select Committee – Proposed rapid scrutiny exercises

Name of Rapid Scrutiny exercise Terms of reference / aims (Origins)	Membership (vacancies)	Planned start date Final report expected
Education Performance Outcomes To set up a rapid scrutiny to understand in more depth the Year 6 performance figures, trends and outliers (CSC 12 March 2024)		Nov 2024
Inclusion To review currently available data on inclusion and determine if further scrutiny could add value. This may include a review of current exclusion data and whether the information available enables monitoring of impact for pupils with either EHCP or SEND. Links to Alternative Provision and Safety Valve should be considered in terms of the timing of this activity. (OS/Exec meeting 2024)		Jan 2025
Homelessness (as relevant to Children's Services) To ensure the robustness of the council's action plan / measures in place in response to ILAPS / Ofsted recommendations (OS/Exec meeting 2024)		Early autumn

Children's Select Committee – Proposed task groups

Name of Task Group Terms of reference / aims (Origins)	Membership (vacancies)	Planned start date Final report expected
School performance and attainment outcome		

<p>To consider:</p> <ul style="list-style-type: none"> • Performance • What can be done to improve results? • The role of the Wiltshire Learning Alliance (WLA) in delivering improvement <p>NB – information on the WLA is coming to the committee in November 2024 (OS/Exec meeting 2024)</p>	<p>Vacancies: 5</p>	<p><i>Origins: OS/Exec meeting 2024</i></p>
<p>Residential care and complex care</p> <p>Longer term support for children with more complex needs.</p> <p>To consider (by comparing with other models available):</p> <ul style="list-style-type: none"> • Shaping of the service • How to ensure good outcomes for children <p>NB – this links to a tender process in the New Year (OS/Exec meeting 2024)</p>	<p>Vacancies: 5</p>	<p>Autumn</p> <p><i>Origins: OS/Exec meeting 2024</i></p>
<p>Children and Young Peoples Mental Health services and developments</p> <p>Proposed over three meetings:</p> <ol style="list-style-type: none"> Review of needs assessment undertaken and outcomes / analysis What is being done elsewhere? Both national / regional comparison as well as what third sector is doing in Wiltshire (will link with Youth Network - and others - as witnesses for this part) Proposal for future service(s) with a focus on the outcomes sought (and how these would be measured and monitored) <p>NB – consideration to be given on how to get young people’s views (may be survey promoted by different providers / groups). (OS/Exec meeting 2024)</p>	<p>Cllr Caroline Corbin Cllr Jo Trigg Cllr Mark Verbinnen Cllr Carole King</p> <p>Vacancies: 1</p> <p><i>Supporting officer Marie Gondlach</i></p>	<p>ASAP – Report Sept 2024?</p>
<p>Post 16 provision – task group</p>	<p>Cllr Jo Trigg</p>	

<p>To establish a clear picture of post-16 education provision available to young people in Wiltshire and availability of / options for transport to access that provision.</p> <p>This should also take into consideration the following information the committee had previously identified as of interest:</p> <ul style="list-style-type: none"> • Following the Youth Transport task group’s work and executive response – including National Bus Strategy and any decision or progress regarding a single "Wiltshire Youth Card" . • To include input from the council’s review of transport services for children and young people with SEND (commissioning team). 	<p>Nikki Barnett Cllr Graham Wright Cllr Bridget Wayman Mr Michael Thompson</p> <p>Vacancies: 0</p> <p><i>Supporting officer</i> <i>Marie Gondlach</i></p> <p>Lead officers Kirstie Barter Cara Madden Clara Davies</p>	
<p>Budget and Major Contracts task group</p> <p>To regularly review implementation of the budget and impact on services, and to consider major contracts (value to be agreed) either when they are approaching renewal or extension or before the tender process with a focus on the council’s expectations and requirements with regards to the quality, quantity and frequency of monitoring information provided by contractors and how that information will be monitored by the council (including overview and scrutiny involvement)</p>	<p>endorsed by CSC on 17 January 2023</p> <p>Vacancies: 5</p>	

Children's Select Committee – task groups and rapid scrutiny exercises completed in the last 12 months

Name	Final report
Actions / monitoring	Executive response
Rapid Scrutiny exercise on Provision of Accommodation for Young People at Transition Time - Gap Analysis Cllr Carole King (Lead), Cllr Mike Sankey, Cllr Jo Trigg	19 January 2022 15 Mrch 2022
Disadvantaged Learners Task Group Cllr Jo Trigg (Chair), Cllr Trevor Carbin, John Hawkins, Cllr Kathryn Macdermid, Cllr Gordon King, Cllr Caroline Thomas	7 June 2022 6 July 2022
High needs block funding Rapid Scrutiny Cllr Jo Trigg (Lead), Cllr Pauline Church, Cllr Kathryn MacDermid	17 January 2023 06 June 2023
Youth provision and youth service funding – task group Cllr Helen Belcher, Cllr Jo Trigg, Cllr Iain Wallis, Cllr Mark Verbinnen, Cllr Jac Oatley	21 September 2023 24 January 2024
Emotional Wellbeing and Mental Health (CSC 21 September 2023) – joint RS with HSC	

This page is intentionally left blank